







Preserving what matters most



CONTENTS

-150°C	Cryogenic Freezers	4
-86°C	Ultra Low Temperature Freezers	6
-40°C	Low Temp Freezers	16
-25°C 2 ~ 8°C	Combined Freezers & Refrigerators	18
-10~-25°C 2 ~ 8°C	Convertible Freezers & Refrigerators	20
-25°C	Biomedical Freezers	22
-20°C	Biomedical Freezers	24
-18 ~ -22°C	Visi Freezers	28
4° ± 1°C	Blood Bank Refrigerators	30
2~8°C	Explosion Proof Lab Refrigerators	32
2~8°C	Pharmacy Refrigerators	34
2~8°C	Ice Lined Refrigerators	38
0 ~ 10°C	Traditional Medicine Coolers	40
0 ~ 10°C	Biomedical Refrigerators in SS	41
-20°C ~ +20°C	Mobile Freezers / Coolers	42
2~8°C	Medical Vaccine Carriers	44
20°C ~24°C	Blood Platelet Incubators	46
	Lab Use Flake Ice Machines	48
	Coldrooms	52
	Liquid Nitrogen Storage Solution	62
	Medical Oxygen Concentrators	72
	Foot Press Water Dispensers	78
	Mortuary Chambers	80

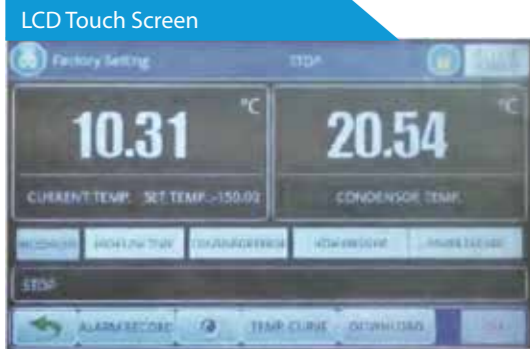
Trufrost presents a comprehensive range of reliable biomedical refrigeration products that are suitable for hospitals, blood banks, pharmacies, research institutes, laboratories in electronic & chemical plants, fisheries and more.

-150°C Cryogenic Freezers

This product is specially designed and manufactured for long term storage of various biological products, including viruses, germs, erythrocytes, leucocyte and cutis. Applications can be found in blood banks, hospitals, epidemic prevention services, and research institutes, laboratories in electronic and chemical plants, bio-logical engineering institutes and marine fishery companies.



MDF-150H128



Safety

- ◆ Malfunction alarms including high and low temperature, power failure, sensor error, clean-filter, and condenser clean, abnormal voltage, low battery, thermostate failure
- ◆ Capable of producing two types of alarm outputs, audible buzzer and visible flashing light.
- ◆ Door open feature standard and USB port for temperature data downloading standard on upright models.
- ◆ Remote alarm contacts.

Installation and application

- ◆ 380v/50Hz electrical design, stable power supply, rapid cooling, rapid cooling in 6 hours
- ◆ Suitable for 10°C to 32°C ambient temperature

Field proven reliability

- ◆ 7 inches touch screen to display current temperature, history temperature, all alarm records and data.
- ◆ Standard with USB port to download alarm and temperature data
- ◆ Non-flammable HC refrigerant to guarantee users's safety.
- ◆ Emergency stop to protect operator

Key design features

- ◆ Microprocessor-controlled system designed for controlled range of -40°C to -15°C or cabinet space with 1°C increment
- ◆ Settable high temperature and low temperature alarms
- ◆ Optional temperature recorder, storage racks and storage box

Energy Saving

- ◆ Unique door seal design for the minimum loss of cold temperature during a door opening
- ◆ 200mm thickness without CFC insulation to minimize cabinet heat gain and to improve temperature stability.

Technical Specifications



Model	Ambient Temperature (°C)	Temperature Range (°C)	Dimensions W*D*H (mm)	Capacity (L/ cu.ft)	Electricals	Sensor	20GP/40GP/40HQ	USB	LCD Touch Screen
MDF-150H128	10~32	-40 ~ -150	1555*956*147	128L	380V/50Hz	PT100	3	Yes	Yes

Specifications are subject to change without prior notice due to continuous product development



-86°C

Ultra Low Temp Chest Freezers

This product is specially designed and manufactured for long term storage of various biological products, including viruses, germs, erythrocytes, leucocytes and cutis. Applications can be found in blood banks, hospitals, epidemic prevention services, research institutes, laboratories in electronic and chemical plants, bio-logical engineering institutes and marine/fishery companies.



MDF-86H105



MDF-86H485

Key Features of Ultra Low Temp Freezers:

Field proven reliability

- ◆ Unique insulated inner door design for four separate storage compartments to minimize frost buildup inside the chamber.
- ◆ Specialized control system design for a well-balanced operation of cascade refrigeration system.
- ◆ Positive field proven reliability record.

Safety

- ◆ Malfunction alarms including high and low temperature, power failure, sensor error, clean-filter, and extremely high ambient.
- ◆ Capable of producing two types of alarm outputs: audible buzzer and visible flashing light.
- ◆ Door open feature standard and USB

port for temperature data downloading standard on upright models.

- ◆ Remote alarm contacts.

Installation and Application

- ◆ Wide range operating voltage system from 185V to 260v designed to allow units installed in areas with poor voltage condition
- ◆ Suitable for 10°C to 32°C ambient temperature

Energy saving

- ◆ Unique door seal design for the minimum loss of cold temperature during a door opening.
- ◆ High performance VIP insulation panels to minimize cabinet heat gain and to improve temperature stability.

Key design features:

- ◆ Microprocessor-controlled system designed for controlled range of -40°C to -86°C for cabinet space with 1°C increment
- ◆ Settable high temperature and low temperature alarms.
- ◆ Automatic clean-filter alarm and sensor error alert.
- ◆ Adjustable storage shelf height
- ◆ Optional temperature recorder, storage racks and storage box

	Model No.	MDF-86H105	MDF-86H485
Specifications	Self/drawer QTY	-	-
	Cooling	Direct Cooling	Direct Cooling
	Defrost	Manual	Manual
	Refrigerant	Mixed Gas	Mixed Gas
	Power Consumption (kWh/24h)	3.8	11.5
	Noise (db)	50	54.5
	Ambient temperature (C)	10 ~ 32	10 ~ 32
	Temperature range (C)	-40 ~ -86	-40 ~ -86
Cooling System	Compressor Brand/QTY	CUBIGEL/1	SECOP/1
	Sensor	PTC	PTC
	Temperature Controller	Microprocessor	Microprocessor
	Display	Digital Display	Digital Display
Power	Voltage/Frequency (V/Hz)	220/50Hz	220/50Hz
	Power (W)	455W	670W
Material	Current (A)	2.2	3.57
	Inside Material	Stainless Steel	Stainless Steel
	Outside Material	Color Sprayed Steel	Color Sprayed Steel
Size	Insulation	PUF	PUF
	Capacity (L/cu.ft)	105/3.70	485/17.12
	Net/Gross Weight (Kg)	42/45	130/150
	Exterior Size (WxDxH) (mm)	680 x 580 x 935	1695 x 840 x 962
	Interior Size (WxDxH) (mm)	480 x 380 x 665	1455.5 x 525.2 x 674
	Package Size (WxDxH) (mm)	770 x 705 x 1090	1765 x 900 x 1060
Frozen Racks	Racks	4(11x1.6x1)	30(11x1.6x1)
	Boxes (2 Inches)	34	30
	Samples (2ml)	3400	30000
Alarm	High/Low Temperature	Y	Y
	Power Failure	-	-
	Abnormal Voltage	-	-
	Sensor Error	Y	Y
	Filter Screen Check	-	-
	Thermostate Failure	Y	Y
	Low Battery	-	-
	Condenser Clean	-	-
	High Ambient Temperature	-	-
	Door Ajar	-	-
	Castor	Y	Y
	Inside Door	-	-
	Test Hole QTY/Diameter	1/25MM	1/25MM
	USB Port	-	-
Chart Recorder	Optional	Optional	
Data Logger	Optional	Optional	
Power Failure Backup System (Alarm)	-	-	
Remote Alarm Port	-	-	
CO2 Backup System	Optional	Optional	
LN2 Backup System	Optional	Optional	
Certifications		ISO, CE	ISO, CE

Specifications are subject to change without prior notice due to continuous product development

-86°C

Ultra Low Temp Freezers

Trufrost -86 ULT Freezers are specially designed for long term storage of various biological products, including viruses, germs, erythrocytes, leucocytes and cutis. They are ideal for blood banks, hospitals, epidemic prevention services, research institutes, laboratories in electronic & chemical plants, biological institutes and fisheries. All -86V models comes with 2 years comprehensive warranty on machine and 1 year extended warranty on compressor.



MDF-86V728E, MDF-86V838E



MDF-86V588E



MDF-86V408E, MDF-86V340E



MDF-86V188E

Key Features of Ultra Low Temp Freezers:

- Optimized double cascade refrigeration technology for ultra-low temperature application
- Environment friendly CH refrigerant helps save up to 50% on energy costs
- Advanced Vacuum Insulation Panel (VIP) technology enhances sealing and minimizes heat conduction rate resulting in 30% more storage volume
- Suitable for 10°C to 32°C ambient temperature Rapid cooling even at 38°C ambient temperature
- LED display for easy viewing of cabinet temperature, set temperature, ambient temperature, input voltage and early warning for malfunctions
- Derived temperature and alarm record within a month through USB port
- Special noise reduction design with advanced shock absorbers in key component
- Easy to remove and clean dust filter
- White board for records in MDF-86V838 & MDF-86V588
- Double lock system to avoid abnormal door opening

Safety Control System:

- Malfunction alarms for cabinet temperature, voltage or ambient temperature exceeding the range and also for power failure or sensor error
- Audio visual alarm with buzzer & flashing light
- Optional remote alarm through USB port or SMS alarm
- Password protected lockable keyboard

Interior view & key features of ULT Freezers



Changeable sensor box or you could put another sensor from here to monitor or record temperature



High quality door seals with 5 gaskets, 4 seals for outer door



Handle, easy to use with 2 locks

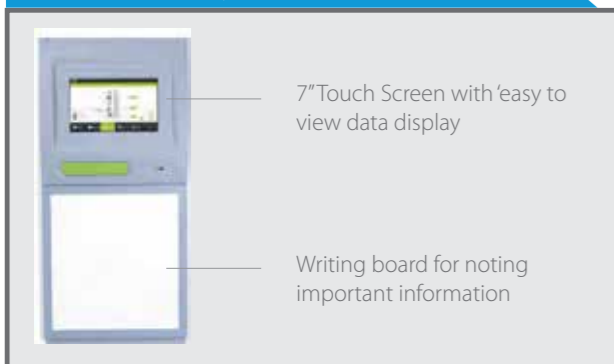
- 2 individual inner doors open independently to minimize frost buildup inside the chamber.
- Unique door seal design for minimal loss of cooling
- Stainless Steel handle ensures convenient door openings even in case of frost.



Big condenser for better heat dissipation

Special V.I.P (Vacuum Insulation Panel) design with extra insulation cuts down heat loss by 25%

Touch Screen Display of MDF-86V838 & MDF-86V588



7" Touch Screen with easy to view data display

Writing board for noting important information

Digital Display of MDF-86V340II



Other Optional Accessories



Boxes



Racks



Vial Holders



Temperature Recorder

-86°C

Mini Ultra Low Temp Freezers

Trufrost -86 ULT Freezers are specially designed for long term storage of various biological products, including viruses, germs, erythrocytes, leucocytes and cutis. They are ideal for blood banks, hospitals, epidemic prevention services, research institutes, laboratories in electronic & chemical plants, biological institutes and fisheries.



MDF-86V58

Special:

- ◆ Patented technology, mixed refrigerant.
- ◆ Standard remote alarm port
- ◆ Cold storage box loading QTY:2400
- ◆ MRNA vaccine can be stored: 2400pcs
- ◆ 10 visual and audible alarms.

Key Features

- ◆ Wide temperature range : 10°C ~ 32°C ambient temperature can reach -86°C.
- ◆ Accurate Temperature control technology to make the temperature maintain -40°C~-86°C and accuracy 0.1°C.
- ◆ The single level optimization of auto cascade refrigeration system design, less refrigeration component for easy maintenance.
- ◆ SPCC sprayed steel external material and 304 stainless steel inner chamber for friendly using and easy cleaning.

Safety

- ◆ Build-in back-up battery to display temperature and to operate audible and visual alarm system for up to 72 hours without AC power.
- ◆ Visual and audible alarm system:High/low temperature, Sensor error, Thermostat failure alarm, power failure alarm,door switch, ambient temperature alarm, condenser failure alarm, filter check alarm, voltage abnormal alarm, low battery alarm
- ◆ Power failure protection: turn on delay of the cooling system when power failure,restart delay protection.
- ◆ Keyboard lock, password protection to avoid set parameter randomly.
- ◆ Wide available voltage range: 198V~242V.

Humanized design:

- ◆ 4 casters with stopper for easy moving and fixation.
- ◆ 1 adjustable shelves for easy storing.
- ◆ Removable condenser dust gauze convenient for cleaning and maintenance.
- ◆ Removable inner door for user to defrost and clean.
- ◆ Standard Independent Power Switch.





Model No.	MDF-86V838E	MDF-86V728E	MDF-86V588E	MDF-86V408E	MDF-86V340E	MDF-86V188E	MDF-86V58
Self/drawer QTY	Stainless Steel (3)	Stainless Steel (3)	Stainless Steel (3)	Stainless Steel (3)	Stainless Steel (3)	Stainless Steel (2)	Stainless Steel (1)
Cooling	Direct Cooling	Direct Cooling	Direct Cooling	Direct Cooling	Direct Cooling	Direct Cooling	Direct Cooling
Defrost	Manual	Manual	Manual	Manual	Manual	Manual	Manual
Refrigerant	Mixed gas	Mixed gas	Mixed gas	Mixed gas	Mixed gas	Mixed Gas	Mixed Gas
Power Consumption (kWh/24h)	19.98	23.44	16.02	12.82	13.09	8.2	5.6
Noise (db)	55	50	53	50	52	55	49.5
Ambient temperature (C)	10 ~ 32	10 ~ 32	10 ~ 32	10 ~ 32	10 ~ 32	10 ~ 32	10 ~ 32
Temperature range (C)	-40 ~ -86	-40 ~ -86	-40 ~ -86	-40 ~ -86	-40 ~ -86	-40 ~ -86	-40 ~ -86
Compressor Brand/QTY	SECOP/2	SECOP/2	SECOP/2	SECOP/1	SECOP/1	CUBIGEL/1	SECOP/1
Sensor	PT 100	PT 100	PT 100	PT 100	PT 100	PTC	PTC
Temperature Controller	Microprocessor	Microprocessor	Microprocessor	Microprocessor	Microprocessor	Microprocessor	Microprocessor
Display	7"LCD touch screen	7"LCD touch screen	7"LCD touch screen	7"LCD touch screen	7"LCD touch screen	Digital Display	Digital Display
Pull down time*(min)	268	247	178	245	224		
Warm up time**(min)	304	292	273	234	224		
Voltage/Frequency (V/Hz)	220/50Hz	220/50Hz	220/50Hz	220/50Hz	220/50Hz	220/50Hz	220/50Hz
Power (W)	1700W	1400W	1500W	890W	810W	610W	442W
Current (A)	10.75A	10.37A	10.35A	5.34A	5.13A	3.3	2.67
Inside Material	Stainless Steel	Stainless Steel	Stainless Steel	Stainless Steel	Stainless Steel	Stainless Steel	Stainless Steel
Outside Material	Color Sprayed Steel	Color Sprayed Steel	Color Sprayed Steel	Color Sprayed Steel	Color Sprayed Steel	Color Sprayed Steel	Color Sprayed Steel
Insulation	VIP+PUF	VIP+PUF	VIP+PUF	VIP+PUF	VIP+PUF	PUF	PUF
Capacity (L/cu.ft)	838/29.59	728/25.7	588/20.76	408/14.40	340/12	188/6.63	58
Net/Gross Weight (Kg)	391/424	374/394	303/332	268/293	268/288	145/180	115/155
Exterior Size (WxDxH) (mm)	1160x1172x1994.5	1229x1012x1994.5	872x1192x1994.5	872x1028x1945.5	854x1006x1907	880x810x1607.5	635x757x1212
Interior Size (WxDxH) (mm)	894x718x1310	963x571x1350	606x738x1310	606x575x1180	488x607x1140	465x465x830	330x453x410
Package Size (WxDxH) (mm)	1270x1100x2185	1320x970x2185	970x1138x2185	954x955x2094	935x1070x2128	880x920x1830	730x845x1400
Racks	N3J-255D*24	N3J-254D*18 N3J-264D*6	N3J-255D*16	N3J-254D*8 N3J-244D*8	N3J-244D*12	9 (4x3)	-
Boxes (2 Inches)	600	504	400	288	192	108	-
Samples (2ml)	60000	50400	40000	28800	19200	10800	2400
High/Low Temperature	Y	Y	Y	Y	Y	Y	Y
Power Failure	Y	Y	Y	Y	Y	-	Y
Abnormal Voltage	Y	Y	Y	Y	Y	-	Y
Sensor Error	Y	Y	Y	Y	Y	Y	Y
Filter Screen Check	Y	Y	Y	Y	Y	-	Y
Thermostat Failure	Y	Y	Y	Y	Y	Y	Y
Low Battery	Y	Y	Y	Y	Y	-	Y
Condenser Clean	Y	Y	Y	Y	Y	-	Y
High Ambient Temperature	Y	Y	Y	Y	Y	-	Y
Door Ajar	Y	Y	Y	Y	Y	-	Y
Power Failure Backup System (Alarm)	72h	72h	72h	72h	72h	72h	72h
Castor	Y	Y	Y	Y	Y	Y	Y
Inside Door	2	2	2	2	2	3	1
Test Hole QTY/Diameter	1/25M	1/25M	1/25M	1/25M	1/25M	1/25M	1/25M
USB Port	Y	Y	Y	Y	Y	-	-
Chart Recorder	-	-	-	-	-	-	-
Data Logger	Optional	Optional	Optional	Optional	Optional	Optional	Optional
Remote Alarm Port	Y	Y	Y	Y	Y	-	Y
CO2 Backup System	Optional	Optional	Optional	Optional	Optional	Optional	Optional
LN2 Backup System	Optional	Optional	Optional	Optional	Optional	Optional	Optional
Certifications	ISO, CE	ISO, CE	ISO, CE	ISO, CE	ISO, CE	ISO, CE	ISO, CE

Model No.	MDF-86V338	MDF-86V340	MDF-86V408	MDF-86V588	MDF-86V688	MDF-86V728	MDF-86V838	MDF-86V408D	MDF-86V588D	MDF-86V838D
Self/drawer QTY	Stainless Steel (3)	Stainless Steel (3)	Stainless Steel (3)	Stainless Steel (3)	Stainless Steel (3)	Stainless Steel (3)	Stainless Steel (3)	Stainless Steel (3)	Stainless Steel (2)	Stainless Steel (1)
Cooling	Direct Cooling	Direct Cooling	Direct Cooling	Direct Cooling	Direct Cooling	Direct Cooling	Direct Cooling	Direct Cooling	Direct Cooling	Direct Cooling
Defrost	Manual	Manual	Manual	Manual	Manual	Manual	Manual	Manual	Manual	Manual
Refrigerant	HC	R508 & R404	HC	HC	R508 & R404	HC	HC	Mixed gas	Mixed Gas	Mixed Gas
Power Consumption (kWh/24h)	12.8	20	11.6	12	20	15.4	13.86	11	15.5	24
Noise (db)	50	50	55	55	55	53	55	53	50	55
Ambient temperature (C)	10 ~ 32	10 ~ 43	10 ~ 32	10 ~ 32	10 ~ 43	10 ~ 32	10 ~ 32	10 ~ 32	10 ~ 32	10 ~ 32
Temperature range (C)	-60 ~ -86	-60 ~ -86	-60 ~ -86	-60 ~ -86	-60 ~ -86	-60 ~ -86	-60 ~ -86	-60 ~ -86	-40 ~ -86	-40 ~ -86
Compressor Brand/QTY	SECOP/2	SECOP/2	SECOP/2	SECOP/2	SECOP/2	SECOP/2	SECOP/2	SECOP/2	SECOP/2	SECOP/2
Sensor	PTC	PTC	PTC	PTC	PTC	PTC	PTC	PTC	PTC	PTC
Temperature Controller	Microprocessor	Microprocessor	Microprocessor	Microprocessor	Microprocessor	Microprocessor	Microprocessor	Microprocessor	Microprocessor	Microprocessor
Display	Digital Display	Digital Display	LCD Display	LCD Display	Digital Display	LCD Display	LCD Display	LCD Display	LCD Display	LCD Display
Voltage/Frequency (V/Hz)	220/50Hz	220/50Hz	220/50Hz	220/50Hz	220/50Hz	220/50Hz	220/50Hz	220/50Hz	220/50Hz	220/50Hz
Power (W)	870W	1350W	845W	815W	808W	935W	890W	725W	800W	840W
Current (A)	6.75	5.8	7	7	7	7	7	5.7	6.9	6.5
Inside Material	Stainless Steel	Stainless Steel	Stainless Steel	Stainless Steel	Stainless Steel	Stainless Steel	Stainless Steel	Stainless Steel	Stainless Steel	Stainless Steel
Outside Material	Color Sprayed Steel	Color Sprayed Steel	Color Sprayed Steel	Color Sprayed Steel	Color Sprayed Steel	Color Sprayed Steel	Color Sprayed Steel	Color Sprayed Steel	Color Sprayed Steel	Color Sprayed Steel
Insulation	PUF	PUF	PUF	PUF	PUF	PUF	PUF	PUF	PUF	PUF
Capacity (L/cu.ft)	338/11.93	340/12	408/14.40	588/20.76	688/24.29	728/25.70	838/29.59	408	588	838
Net/Gross Weight (Kg)	190/220	190/220	215/245	249/275	260/290	320/350	275/305	215/245	249/275	275/305
Exterior Size (WxDxH) (mm)	854x1072x1907	854x1072x1907	872x940x1945.5	872x1100x1994.5	1354x1072x1907	1248x970x1994	1160x1085x1994.5	872x940x1945.5	872x1100x1994.5	1160x1085x1994.5
Interior Size (WxDxH) (mm)	488x607x1140	488x607x1140	606x575x1180	606x738x1310	990x607x1140	963x558x1350	894x718x1310	606x575x1180	606x738x1310	894x718x1310
Package Size (WxDxH) (mm)	937x1075x2135	937x1075x2135	950x960x2110	970x1140x2190	1475x1090x2145	1320x975x2185	1280x1120x2210	950x960x2110	970x1140x2190	1280x1120x2210
Racks	12 (4x4)	12 (4x4)	16 (5x4, 4x4)	16 (5x5)	24 (4x4)	18 (5x4) + 6 (6x4)	24 (5x5)	16 (5x4, 4x4)	16 (5x5)	24 (5x5)
Boxes (2 Inches)	192	192	288	400	384	504	600	288	400	600
Samples (2ml)	19200	19200	28800	40000	38400	50400	60000	28800	40000	60000
High/Low Temperature	Y	Y	Y	Y	Y	Y	Y	Y	Y	Y
Power Failure	Y	Y	Y	Y	Y	Y	Y	Y	Y	Y
Abnormal Voltage	Y	Y	Y	Y	Y	Y	Y	Y	Y	Y
Sensor Error	Y	Y	Y	Y	Y	Y	Y	Y	Y	Y
Filter Screen Check	Y	Y	Y	Y	Y	Y	Y	Y	Y	Y
Thermostat Failure	Y	Y	Y	Y	Y	Y	Y	Y	Y	Y
Low Battery	Y	Y	Y	Y	Y	Y	Y	Y	Y	Y
Condenser Clean	Y	Y	Y	Y	Y	Y	Y	Y	Y	Y
High Ambient Temperature	Y	Y	Y	Y	Y	Y	Y	Y	Y	Y
Door Ajar	Y	Y	Y	Y	Y	Y	Y	Y	Y	Y
Power Failure Backup System (Alarm)	72h	72h	72h	72h	72h	72h	72h	72h	72h	72h
Castor	Y	Y	Y	Y	Y	Y	Y	Y	Y	Y
Inside Door	2	2	2	2	2	2	2	2	2	2
Test Hole QTY/Diameter	2/25MM	2/25MM	1/25M	1/25M	2/25M	1/25M	1/25M	1/25M	1/25M	1/25M
USB Port	Y	Y	Y	Y	Y	Y	Y	Y	Y	Y
Chart Recorder	Optional	Optional	Optional	Optional	Optional	Optional	Optional	-	-	-
Data Logger	Optional	Optional	Optional	Optional	Optional	Optional	Optional	Optional	Optional	Optional
Remote Alarm Port	Y	Y	Y	Y	Y	Y	Y	Y	Y	Y
CO2 Backup System	Optional	Optional	Optional	Optional	Optional	Optional	Optional	Optional	Optional	Optional
LN2 Backup System	Optional	Optional	Optional	Optional	Optional	Optional	Optional	Optional	Optional	Optional
Certifications	ISO, CE	ISO, CE	ISO, CE	ISO, CE	ISO, CE	ISO, CE	ISO, CE	ISO, CE	ISO, CE	ISO, CE

Racks & Cryo-boxes

Store your freezer storage boxes within organized freezer racks. Trufrost offers stainless steel racks to optimize your freezer space and makes it easy to find the items you desire. We offer variety of racks for our freezers. These racks are made of high-quality stainless steel and help you organize the samples inside your freezer. Our range consists of racks for both chest freezers and upright freezers.



Upright drawer rack

Strong stainless steel racks with drawers for easy and practical access to your boxes. The drawers slide smoothly and easily, which facilitates easy removal and insertion.

The upright drawer rack is equipped with a smart grip, which ensures easy handling and finding of necessary samples. When using racks with drawers, only the relevant drawer with the freezer boxes of interest is pulled-out.

All other boxes stay safely in the cold interior of the ULT freezer. The Trufrost racks are designed for smooth and ergonomic handling, as well as to give a great overview of samples.



Model No.	N3J-254D	N3J-264D	N3J-255D	N3J-244D	N3J-243D	N3J-262D
Material	Stainless steel	Stainless steel	Stainless steel	Stainless steel	Stainless steel	Stainless steel
Box type	2 inch 9*9/10*10"	2 inch 9*9/10*10"	2 inch 9*9/10*10"	2 inch 9*9/10*10"	2 inch 9*9/10*10"	2 inch 9*9/10*10"
Box layout	5x4	6x4	5x5	4x4	4x3	6x2
Box Qty	20	24	25	16	12	12
Dimensions W*D*H (mm)	140*559*291	140*559*350	140*686*291	140*559*236	140*424*236	140*281*350

Chest front rack

The chest front rack is designed for optimal suiting of chest freezers. Due to the design and choice of material, these unique racks are extremely solid and long-lasting stainless steel. The box is removed from the front, thus ensuring a good overview. The handle in the top meanwhile ensures easy handling of the racks.



	N3J-2B1U	N3J-261U
Box layout	11 X 1	6 X 1

Cryo-boxes

- ◆ 2 inch box
- ◆ 133*133*53mm
- ◆ 9*9/10*10 wells



Paper Cryo-box



PC Cryo-box



PP Cryo-box

Technical Specification ULT Freezer Cryo Consumables

Suitable Models	Cryo-boxes Size and type 133*133*53 mm (wxdxh)	Freezer Racks Layout	Number of Racks on each shelf/ layer	Number of shelves/ layers in the Freezer	No. of storage racks	Maximum storage sample quantities (2ml internal spin cryopreservation tube) / pcs	Rack Model	Rack's Exterior size(mm)		
								Height	Width	Depth
MDF-86V838D MDF-86V838 MDF-86V838E	2-inch	5*5	6	4	24	60000	N3J-255D	291	686	140
MDF-86V728D MDF-86V728 MDF-86V728E MDF-86V690D	2-inch	6*4; 5*4	6 First layer: place 6 racks with 5*4 Second layer: place 6 racks with 5*4 Third layer: place 6 racks with 5*4 Fourth layer: places 6 racks with 6*4	4	24	50400	N3J-264D N3J-254D	349.5 291	559	140
MDF-86V588D MDF-86V588 MDF-86V588E MDF-86V588N MDF-86V588B*	2-inch	5*5	4	4	16	40000	N3J-255D	291	686	140
MDF-86V408D MDF-86V408 MDF-86V408N MDF-86V408E MDF-86V408EN	2-inch	5*4; 4*4	4 First layer: place 4 racks with 5*4 Second layer: place 4 racks with 4*4 Third layer: place 4 racks with 5*4 Fourth layer: places 4 racks with 5*4	4	16	28800	N3J-254D N3J-244D	291 236	559	140
MDF-86V338 MDF-86V338N MDF-86V340E	2-inch	4*4	3	4	12	19200	N3J-244D	236	559	140
MDF-86V180E		4*3	3	3	9	10800	N3J-243D	236	424	140
MDF-86V58	2-inch	6*2	1+1	1	2	2400	N3J-262D	349.5	281	140
MDF-150H128		10*1	9	0	9	9000	/			
MDF-86H485	2-inch	11*1 + 6*1	24+6	0	30	30000	/	650.2	145.2	139.4
MDF-86H100		11*1 + 6*1	2+2	0	4	3400	/	355.2	145.2	139.4

Specifications are subject to change without prior notice due to continuous product development

CO₂ Backup System for ULT Freezers

Independent equipment CO₂ back up system/LN₂ back up system a backup refrigeration system for Ultra-Low Temperature Freezer failures and power outages. The backup refrigeration system consists of a control system and a supply connection System. The backup system adjusts the solenoid Valve's On-off according to its own temperature control probe. A liquid nitrogen tank or liquid carbon dioxide tank that is connected by a solenoid valve as a Reserve. The solenoid valve is powered by an internal rechargeable battery.



Key Features

- ◆ Small footprint'
- ◆ Easy installation
- ◆ Easy operation
- ◆ Setting temperature is adjustable
- ◆ Alarms to ensure safety

Technical Specifications

Technical Data	Cabinet Type	Horizontal
	Climate Class	N/SN
	Cooling Method	Direct Cooling
	Refrigerant	CO ₂
Performance	Cooling Performance (°C)	-70
	Temperature Range (°C)	-40 ~ -70
	Continuous Working Time	8 hrs
Control	Controller	Microprocessor
	Display	LED
Electrical Data	Power Supply (V/Hz)	220/50
	Power (W)	24
Dimensions	Net Weight (Kg)	13
	Product Dimension (WxDxH) mm	460x223x135
Alarms	Low Battery	Y
	High Temperature	Y
	Low Temperature	Y
	Sensor Error	Y
	Charge Indicator	Y

-86°C

Portable Ultra-low Temp Freezers

New Scott Refrigeration

The inner temperature of the refrigerator is within -86°C ±0.2°C which is precise and stable, and the display accuracy can reach 0.1°C

The Smallest Volume In The Industry

It can be placed on experiment table, and can use DC24V vehicle power supply or AC100V-240V household power supply.

Humanization Design

The body of freezer is made of high-quality structural sheet steel. The head cover has pulling out lifting yoke and the inner part is equipped with refrigeration sheets of various specifications which make it convenient for experimental samples to be cooled directly.



Intelligent temperature control

It has the high definition digital display with the display accuracy reaching 0.1°C. The inner temperature of the inner part can be changed from -40°C to -86°C. It is easy to operate with friendly interface and clear operating condition.



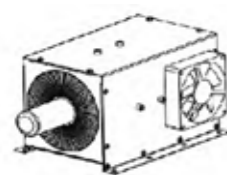
Alarm system

It has various functions including high temperature alarm, low temperature alarm, sensor fault alarm, Main board communication error which can preserve food in a safer way. The protection of power-on delay and power-off interval ensure the safety of operation. The functions of keyboard lockout system and keyword protection prevent adjusting operation parameters at will. The double-locking design



Human-oriented

The body of freezer is made of high-quality structural steel plate which has the tiny volume and can be placed directly on the experiment table and is easy to store samples directly. It's easy to control and there are lifting yoke on the freezer body for moving. The freezer is equipped with refrigeration packs of various specifications which makes it easy for the direct refrigeration of experimental samples.



Refrigeration System

It uses new refrigeration which can refrigerate quick and is energy-efficient without using fluorine-containing freezing medium. It has small size and is easy to carry which can use DC24V vehicle power supply or AC100V-240V household power supply. The foaming body and accessory device for heat preservation use soft EVA blind hole foaming materials. It has good heat preservation flexibility and property and flexible shape and has the strong ability to erase strong high frequency noise.



DW-HL1.8

	Model No.	DW-HL1.8
Specifications	Cabinet Type	Upright
	Capacity(L)	1.8
	Internal Size (W*D*H)mm	152*133*87
	External Size (W*D*H)mm	245*282*496
	Package Size (W*D*H)mm	315*385*530
Performance	NW/GW(Kgs)	12/14
	Temperature Range	-40°C-86°C
	Ambient Temperature	16-32°C
	Cooling Performance	-80°C
	Climate Class	N
Construction	Controller	Microprocessor
	Display	Digital Display
	External Material	SPCC steel with powder coating
Alarm	Inner Material	EVA
	External Lock	Yes
Electrical	Temperature	High/Low temperature, High ambient temperature
	System	Sensor error, Main board communication error
	Power Supply (V/Hz)	DC24V/AC100V-240V50
	Rated Power (W)	60
Certifications	Input Power (W)	80
	Power Consumption (KWh/24h)	2.24
	Rated Current(A)	0.46
		ISO, CE

*The model, parameters and performance specified in this brochure may be changed without prior notice because of product upgrading.
*There may be differences between the product images shown in this brochure and the actual products. When you are buying any product, please check the actual product.

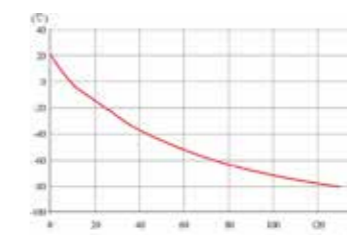


Scope of Application

It can apply to physical evidence for public security, blood station, hygiene epidemic-protection system, academic institutions, electron industry, chemical industry, bioengineering, laboratories in colleges and universities, military enterprises, pelagic fishery companies, etc.

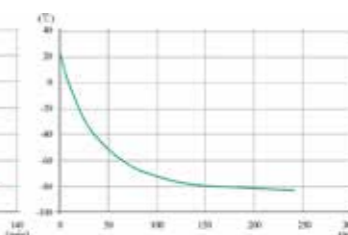
Performance Data / Cooling Curve

Environment temperature: 25°C
Container: 1.5ml minitype needle tubing *48
Cooling time: 25°C -80°C 120min



Put in a 1.5ml mini type test tube (water injected) when powering on

Environment temperature: 25°C
Container: 1.5ml minitype needle tubing *48
Cooling time: 25°C -80°C 3min



Put in a 1.5ml mini type test tube (water injected) when running at -80°C

-40°C

Low Temp Freezers

Designed to store vaccines, blood plasma, biological materials and ideal for use in electronic and chemical laboratories, epidemic prevention centres, hospitals, animal husbandry, blood banks and research institutes.



MDF-40V278W



MDF-40V528



LTF-400

Key Features of Low Temp Upright Freezers:

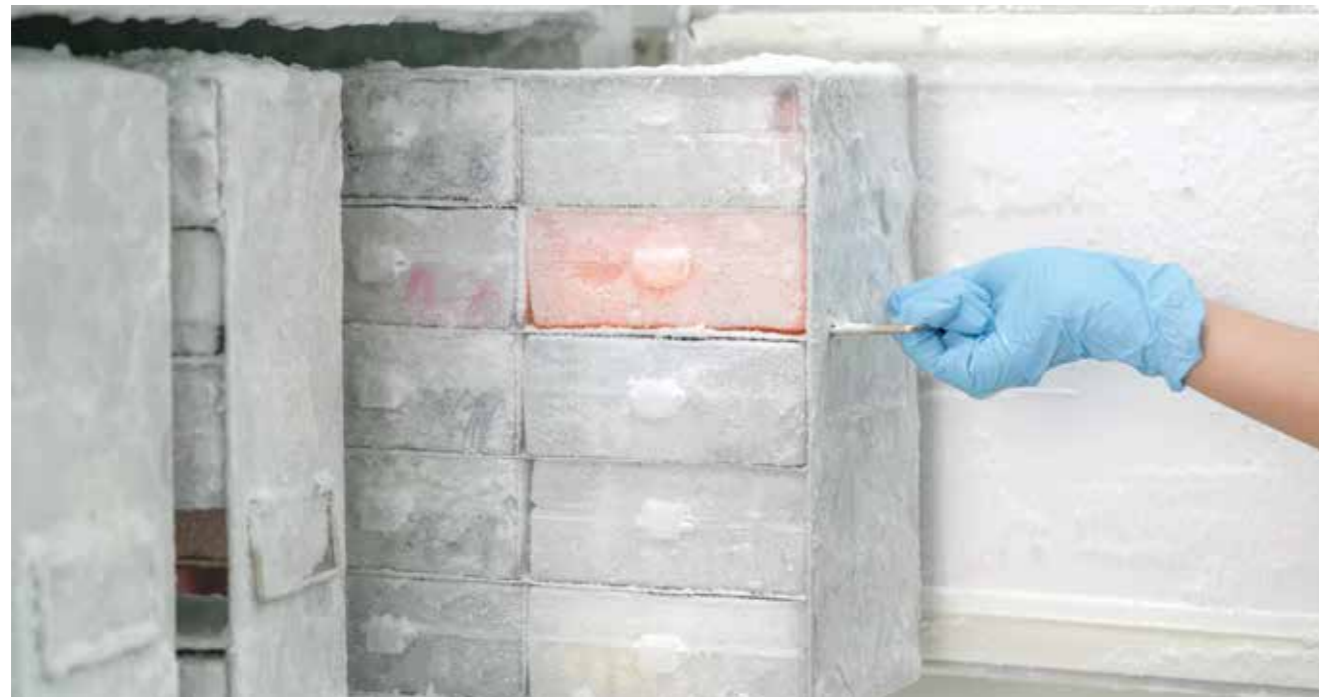
- ◆ Unique refrigeration system for faster cooling
- ◆ Eco-friendly and energy saving CH refrigerant
- ◆ Independent inner door to prevent cooling loss
- ◆ Adjustable shelves with plastic coated steel
- ◆ Built in lock for safety

Key Features of Low Temp Chest Freezers:

- ◆ Unique refrigeration system ensures faster cooling and better stability
- ◆ Energy efficient and environment friendly R 290 refrigerant
- ◆ Lock for safety

Safety Control System:

- ◆ Multiple alarm for high/ low temperature & sensor malfunction
- ◆ Password protected lockable keyboard
- ◆ Micro-computer based temperature control system
- ◆ Ensures high precision and uniform cooling



	Model No.	MDF-40V278W	MDF-40V528	LTF-400	
Specifications	Shelf/Drawer	Drawer	Shelves		
	Cooling Method	Direct Cooling	Direct Cooling	Direct Cooling	
	Defrost	Manual	Manual	Manual	
	Refrigerant	R290	R290	R290	
	Power Consumption (kWh/24h)	1.5	6.7	1.2	
	Noise (db)	50	55		
	Ambient Temperature (C)	10 ~ 32	10 ~ 32	10 ~ 32	
	Temperature Range (C)	-30 ~ -40	-20 ~ -40	-30 ~ -40	
	Cooling System	Compressor Brand QTY	CUBIGEL/1	SECOP/1	HUAYI /1
		Condenser	Inside Foaming	Copper Tube	Wire Tube
Sensor		NTC	NTC		
Temperature Controller		Microprocessor	Microprocessor		
Display		Digital Display	Digital Display	NA	
Power	Voltage/Frequency (V/Hz)	220V/50Hz	220V/50Hz	220V/50Hz	
	Power (W)	185W	345W	288W	
	Current (A)	1.5	2.9	2.4	
Material	Inside Material	Color Sprayed Steel	Color Sprayed Steel	Color Sprayed Steel	
	Outside Material	Color Sprayed Steel	Color Sprayed Steel	Color Sprayed Steel	
	Insulation	PUF	PUF	PUF	
Size	Capacity (L/Cu.ft)	278/9.81	528/18.64	400	
	Net/Gross Weight (Kg)	110/120	160/180	56	
	Exterior Size (WxDxH) (mm)	659 x 600 x 1694	900 x 818.5 x 1828	1234 x 670 x 908	
	Interior Size (WxDxH) (mm)	480 x 415 x 1460	(651 x 631.5 x 635)x2		
	Package Size (WxDxH) (mm)	710 x 650 x 1800	997 x 912 x 1982		
Alarm	High/Low Temperature	Y	Y		
	Power Failure	N	Y		
	Sensor Error	Y	Y		
	Filter Screen Check	N	N		
	Temperature Controller Failure	Y	Y		
	Low Battery	N	N		
	Condenser Clean	N	N		
	High Ambient Temperature	N	N		
	Door Ajar	Y	N		
	Accessories	Foot	N	Y	
Castor		N	Y		
Inside Door		7 Drawer	9 Drawer x 2		
Test Hole QTY/Diameter		N	2 x 25mm		
USB Port		N	N		
Power Failure Backup System (Alarm)		8h	8h		
Remote Alarm Port		N	Y		
Other		Certification	ISO9001, 13485, 14001, CE	ISO9001, 13485, 14001, CE	ISO9001, 13485, 14001, CE

Specifications are subject to change without prior notice due to continuous product development

**-25°C &
2 ~ 8°C**

Combined Freezers & Refrigerators

The Trufrost Combined Freezer & Refrigerator comes with two separate chambers equipped with independent refrigeration circuits. The freezer chamber comes with a vacuum release hole design for opening the door frequently for short durations, and is designed to store vaccines, blood plasma and many other biological materials. The refrigerator section is suitable for storage of medicines, vaccines, reagents and biomedical products.

RELIABILITY

- ◆ Two temperature control systems with double door construction.
- ◆ Flexible and easy storage by height-adjustable shelf trays
- ◆ Maintains the quality of the samples during preservation
- ◆ 2 completely independent chambers with their own temperature displays

KEY FEATURES

- ◆ Refrigerator chamber with foaming heated glass door, you can observe the condition of its internal items
- ◆ Freezer chamber with foaming solid door, high insulation design.
- ◆ The separate top and bottom doors suppress cold air leakage and 2 completely independent chambers each has its own temperature control.



MRF-25V528, MRF-25V300



FEATURES

- ◆ Height-adjustable shelf trays allow you to adjust the inside of the chambers according to the size of the samples. By changing the height of the shelf trays, the unit can accommodate various sizes of samples including stored in your conventional models.
- ◆ Door latch with provision for a padlock hole for extra protection of samples.
- ◆ Equipped with separate doors that suppress the leakage of cold air during opening and closing of the doors, and manual defrosting that helps avoid temperature impact on the samples.

EASY TO CLEAN

- ◆ Top and bottom chambers are equipped with 2 independent refrigeration circuits that enables separate temperature settings and defrosting for the two chambers.
- ◆ Corrosion resistant paint, easy to clean, will not rust.

SAFETY DESIGN

- ◆ To securely preserve/manage the valuable samples, in addition to a standard-feature door lock, a hole in the latch allows a padlock to be attached.
- ◆ Security functions that help protect valuable samples with a temperature control capability that inhibits the change in temperature inside the chamber, and an alarm/security function that prevents errors, the unit maintains the quality of the preserved samples. Temperature recorder (optional)
- ◆ Front-mounted display/control panel located at convenient height for easy access
- ◆ Insulated door with gasket for sample protection and uniformity

	Model No.	MRF-25V528	MRF-25V300	
Specifications	Shelf/Drawer	6	6	
	Cooling Method	Direct Cooling	Direct Cooling	
	Defrost	Manual	Manual	
	Refrigerant	R600/R290	R290	
	Power Consumption (kWh/24h)	-	-	
	Noise (db)	50	46	
	Ambient Temperature (C)	10 ~ 32	10 ~ 32	
	Temperature Range (C)	Freezer: -10°C ~ -25°C Refrigerator: 2°C ~ 8°C	Freezer: -10°C ~ -25°C Refrigerator: 2°C ~ 8°C	
	Cooling System	Compressors	2	2
		Sensor	NTC	NTC
Temperature Controller		Microprocessor	Microprocessor	
Display		Digital Display	Digital Display	
Power		Voltage/Frequency (V/Hz)	220V/50Hz	220V/50Hz
	Power (W)	340W	310W	
	Current (A)	3.4A	2.12A	
Material	Inside Material	Color Sprayed Steel	Color Sprayed Steel	
	Outside Material	Color Sprayed Steel	Color Sprayed Steel	
	Insulation	PUF	PUF	
Size	Capacity (L/Cu.ft)	264 + 264	102 + 198	
	Net/Gross Weight (Kg)	-	-	
	Exterior Size (WxDxH) (mm)	910 x 845 x 1875	650 x 618 x 1974	
	Interior Size (WxDxH) (mm)	Freezer: 651x632x635 Refrigerator: 651x632x635	Freezer: 461x465x60 Refrigerator: 565x480x75	
	Package Size (WxDxH) (mm)	921x960x1950	-	
	Alarm	High/Low Temperature	Y	Y
		Power OFF	Y	N
		Sensor Malfunction	Y	Y
		Temperature Controller Malfunction	Y	Y
		Door Ajar	Y	Y
Accessories		Castor	Y	N
	Test Hole	2/25	2/25	
	Lock	Y	Y	
	Remote Alarm	Y	Y	
Other	Certifications	ISO14001, ISO9001, ISO13485, ISO45001, CE, FDA Listed	ISO14001, ISO9001, ISO13485, ISO45001, CE, FDA Listed	

Specifications are subject to change without prior notice due to continuous product development

-10°C
~ -25°C

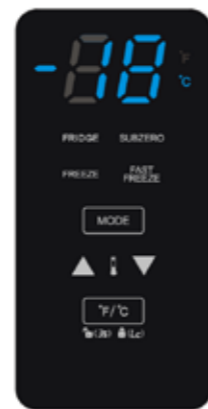
2°C
~ 8°C

Convertible Freezers & Refrigerators

This unique biomedical refrigerator from Trufrost can either be used as a freezer or can be converted into a refrigerator depending upon the items to be stored thanks to its precise digital temperature controller. It is a frost free machine that comes with an automatic defrost.



UF/C-500 Premia



Key Features:

- ◆ **Electrical Temperature Control** - lets you adjust inside temperature to precisely the desired setting
- ◆ **Control Lock** - Prevents accidental changing of preferred temperature setting
- ◆ **Digital Display**
 - ◆ displays inside temperature in Fahrenheit or Celsius mode
 - ◆ provides positive feedback that unit is in lock or unlock mode
 - ◆ tells you when unit is in fast freeze cycle
 - ◆ tells you stored items are being kept in the proper environment
- ◆ **Convection-Freeze System** - Continually surrounds stored items with optimal air circulation to ensure maintenance of perfect temperature, regardless of location within the unit.
- ◆ **Fast Freeze Feature** - turn the unit into a quick freeze system, driving the internal temperature to 20-25 degree below zero.

	Model No.	UF/C-500 Premia
Specifications	Shelf/Drawer	4/2
	Cooling Method	Direct Cooling
	Defrost	Automatic
	Refrigerant	R600a
	Power Consumption (24h)	-
	Ambient Temperature (C)	16 ~ 43
Power	Voltage/Frequency (V/Hz)	220V/50Hz
	Capacity (L/Cu.ft)	500
Size	Exterior Size (WxDxH) (mm)	710x708.5x1728
	Alarm	High/Low Temperature
Accessories	Power OFF	N
	Sensor Malfunction	Y
	Temperature Controller Malfunction	Y
	Door Ajar	Y
	Castor	Y
	Test Hole	N
Other	Lock	Y
	Remote Alarm	N
	Certifications	CE

Specifications are subject to change without prior notice due to continuous product development

Trufrost upright freezers and no-frost chest freezers are designed to store vaccines, biological materials etc., and are ideal for use in electronic and chemical laboratories, epidemic prevention centres, hospitals, animal husbandry, blood banks and research institutes. They also feature precise temperature control and a digital temperature indicator. Trufrost No-Frost Chest Freezers make manual defrosting a thing of the past. They also come with a full set of baskets for segregated loading while the multi-dimensional air flow ensures uniform cooling inside the cabinet.



MDF-25V278W,
MDF-25V328E



UF-371 Premia



	Model No.	MDF-25V278W	MDF-25V328E	UF-371 Premia
Specifications	Shelf/Drawer	7	5	7
	Cooling Method	Direct Cooling	Direct Cooling	Ventilated
	Defrost	Manual	Manual	Frostfree
	Refrigerant	R290	R290	R600a
	Power Consumption (kWh/24h)	1.5	3	-
	Noise (db)	46	46	-
	Ambient Temperature (C)	10 ~ 32	10 ~ 32	16 ~ 43
	Temperature Range (C)	-10 ~ -25°C	-10 ~ -25°C	-25°C
Cooling System	Compressor Brand QTY	DONPERN/1	CUBIGEL/1	
	Sensor	NTC	NTC	NTC
	Temperature Controller	Microprocessor	Microprocessor	Microprocessor
	Display	Digital Display	Digital Display	Digital Display
Power	Voltage/Frequency (V/Hz)	220V/50Hz	220V/50Hz	220V/50Hz
	Power (W)	180W	280W	-
	Current (A)	1.5	1.4	
Material	Inside Material	Color Sprayed Steel	Color Sprayed Steel	Color Sprayed Steel
	Outside Material	Color Sprayed Steel	Color Sprayed Steel	Color Sprayed Steel
	Insulation	PUF	PUF	PUF
Size	Capacity (L/Cu.ft)	278/9.81	328/11.58	371
	Net/Gross Weight (Kg)	105/115	113/131	
	Exterior Size (WxDxH) (mm)	659 x 600 x 1694	673 x 676 x 1886	595x712x1860
	Interior Size (WxDxH) (mm)	480 x 415 x 1460	508 x 455 x 1393	-
	Package Size (WxDxH) (mm)	710 x 650 x 1800	770 x 770 x 2040	-
Alarm	High/Low Temperature	Y	Y	N
	Power OFF	N	Y	N
	Sensor Malfunction	Y	Y	Y
	Temperature Controller Malfunction	Y	Y	Y
	Door Ajar	Y	Y	Y
Accessories	Castor	N	Y	Y
	Test Hole	N	Optional	N
	Lock	N	Y	N
	Remote Alarm	N	Y	N
Other	Certifications	ISO9001, 13485, 14001, CE	ISO9001, 13485, 14001, CE	CE

Specifications are subject to change without prior notice due to continuous product development

Key Features:

- ◆ Unique refrigeration system ensures faster cooling and better stability
- ◆ Environment friendly refrigerant
- ◆ Accurate microprocessor controller to ensure consistent cabinet temperature -10°C ~ -25°C and increment 0.1°C for MDF Model & -10°C ~ -18°C for other models
- ◆ Adjustable height of plastic coated fabric grid, more uniform temperature (MDF Models)
- ◆ Lock for safety
- ◆ Temperature Display



-20°C Biomedical Freezers

Trufrost upright freezers are designed to store vaccines, biological materials etc., and are ideal for use in electronic and chemical laboratories, epidemic prevention centres, hospitals, animal husbandry, blood banks and research institutes. They also feature precise temperature control and a digital temperature indicator. They also come with a full set of baskets for segregated loading while the multi-dimensional air flow ensures uniform cooling inside the cabinet.

Key Features:

- ◆ Unique refrigeration system ensures faster cooling and better stability
- ◆ Environment friendly refrigerant
- ◆ Accurate microprocessor controller to ensure consistent cabinet temperature
- ◆ Lock for safety
- ◆ Temperature Display

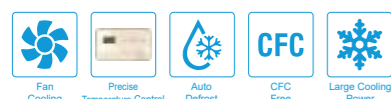


UF-330 Premia



UF-220 Premia





No Frost Convertible Chest Freezers / Chillers

Trufrost no-frost chest freezers are designed to store vaccines, biological materials etc., and are ideal for use in electronic and chemical laboratories, epidemic prevention centres, hospitals, animal husbandry, blood banks and research institutes. No-Frost Chest Freezers make manual defrosting a thing of the past. They also come with a full set of baskets for segregated loading while the multi-dimensional air flow ensures uniform cooling inside the cabinet.

Key Features:

- ◆ Self-adaptive frost system
- ◆ Precise temperature control
- ◆ Multi-dimensional wind circulation
- ◆ Embedded handle
- ◆ Digital temperature indicator
- ◆ 2 baskets for NF-150



NF-150



	Model No.	UF-220 Premia	UF-330 Premia	NF-150
Specifications	Drawer	6	8	2 Basket
	Cooling Method	Direct Cooling	Direct Cooling	With Fan
	Defrost	Manual	Manual	No Frost
	Refrigerant	R-600A	R600a	R290
	Power Consumption (24h)	160W	170W	97W
	Ambient Temperature (C)	10 ~ 32	10 ~ 32	10 ~ 32
	Temperature Range (C)	≤-20°C	≤-20°C	≤-20°C
Power	Voltage/Frequency (V/Hz)	220V/50Hz	220V/50Hz	220V/50Hz
Size	Capacity (L/Cu.ft)	200	310	150
	Exterior Size (WxDxH) (mm)	515x620x1300	595x552x1720	714 x 550 x 903
Alarm	High/Low Temperature	N	N	N
	Power OFF	N	N	N
	Sensor Malfunction	N	N	N
	Temperature Controller Malfunction	N	N	N
	Door Ajar	N	N	N
	Remote Alarm	N	N	N
Accessories	Castor	N	N	Yes
	Test Hole	N	N	N
	Lock	N	N	N
	Remote Alarm	N	N	N
Other	Certifications	CE	CE	ISO9001, CE

Specifications are subject to change without prior notice due to continuous product development

-18°C
~ **-22°C**

Traditional Visi Freezers

Trufrost upright visi freezers are known for their reliability and temperature management. You can choose between Two models that are available in 400 and 1000 litre capacities and are fitted with LED lights to enhance the quality of display. They come with a digital temperature display and a ventilated cooling system with automatic defrost.



Visi Freezers - Premia Series (With top mounted compressors)

These Trufrost Premia Series plug-in type 2 & 3 glass door upright Coolers & Freezers come with top mounted compressors. They provide an ultra rich and pleasing 'top to bottom' view of the displayed foodstuff – be it ice creams or any other packaged food, whether frozen or chilled. They are extremely reliable and work on a ventilated cooling system. The Freezers are specially designed with 2 strong compressors with automatic defrost. The cabinet interiors of both - the Freezers and Chillers come with LED lights to enhance the quality of display.

Key Features

- Forced air circulation
- Adjustable shelves
- Interior LED lights
- Universal wheels, front with brake
- Double pane glass including Low E in Visi Coolers
- Triple pane glass with heated film in Visi Freezers
- Self Closing doors
- Self evaporating drip tray
- Low-maintenance condenser
- Standard ambient for Visi Coolers +35°C at 65%RH and for Visi Freezers +25°C at 60%RH
- Auto-defrost in Visi Freezers



VF-400NF
Visi Freezer



VF-1000NF
2 Door Visi Freezer
New upgraded model with
2 compressors



VF-1250 Premia



VF-1800 Premia

Technical Specifications of Visi Freezers



Specification	Gross Volume (Litres)	Dimensions w x d x h (mm)	Temperature Range	Power (w)	Lock	Defrost	No. of Lids / Doors	No. of Shelves	Interior Light	Wheels / Castors	No. of Compressors	Refrigerant
VF-400NF	400	26 x 28 x 78	-18°C ~ -22°C	570	Yes	Automatic	1	5	2 LEDs	Yes	1	R404a
VF-1000NF	950	48 x 28 x 78	-18°C ~ -22°C	1250	Yes	Automatic	2	10	2 LEDs	Yes	2	R404a

Electricals: 220V/50Hz/1 Phase

Specifications are subject to change without prior notice due to continuous product development

Technical Specifications



Model	Volume (L)	Door type	Shelves	Power	Dimensions (wxdxh) mm	Temperature range	Refrigerant	No. of Compressors
VF-1250 Premia	1250	2 Hinge	10	1472W	1260x750x2092	-18°C ~ -22°C	R404a	2
VF-1800 Premia	1800	3 Hinge	15	1850W	1880x750x2092	-18°C ~ -22°C	R404a	2

Electricals: 220V/50Hz/Single Phase

Specifications are subject to change without prior notice due to continuous product development

4° ± 1°C Blood Bank Refrigerators

Blood storage requires specially designed equipment that must comply with international standards. Trufrost Bank Refrigerators are reliable for storing blood and are ideal for blood banks, hospitals and the medical industry. They can also be used to store pharmacy and biological products in hospitals and disease prevention centers.



Key Features:

- ◆ Advanced forced-air cooling system, large airflow with optimised air channels for inner temperature consistency and special finned evaporator.
- ◆ Inner light and heated double pane glass doors ensure clear display without condensation
- ◆ Microprocessor control with digital temperature display
- ◆ Auto-defrost function ensures good performance in high temperature and high humidity areas
- ◆ Safety lock prevents unauthorized access
- ◆ Large digital display for easier observation
- ◆ SUS shelves for convenient storage of blood bags
- ◆ Self-closing doors



Safety Control System:

- ◆ Alarm mode monitors ambient temperature and system state to ensure safety and reliability of storage conditions.
- ◆ High/Low temperature alarm, thermostat malfunction alarm, power failure alarm in 72 hours, battery backup malfunction alarm, condenser abnormality alarm.
- ◆ Audio and visual alarm
- ◆ USB port, optional temperature controller with thermal printer to track temperature curve
- ◆ Password protection to prevent random parameter change

	Model No.	MBC-4V108	MBC-4V208	MBC-4V658	MBC-4V1008
Specifications	Shelf/Drawer	Shelves/2	Shelves/4	Shelves/12	Drawers/12
	Cooling	Forced - Air Cooling	Forced - Air Cooling	Forced - Air Cooling	Forced - Air Cooling
	Defrost	Auto	Auto	Auto	Auto
	Refrigerant	R134a	R134a	R134a	R134a
	Power Consumption (kWh/24h)	1.95	2.22	6.31	8.53
	Noise (db)	49.6dB(A)	51.2dB(A)	51.2dB(A)	53.6dB(A)
	Ambient Temperature (C)	10 ~ 32	10 ~ 32	10 ~ 32	10 ~ 32
	Temperature Range (C)	4 ± 1	4 ± 1	4 ± 1	4 ± 1
Cooling System	Compressor Brand/QTY	Embraco/1	Embraco/1	SECOP/1	SECOP/1
	Sensor	NTC	NTC	NTC	NTC
	Temperature Controller	Microprocessor	Microprocessor	Microprocessor	Microprocessor
	Display	Digital Display	Digital Display	Digital Display	Digital Display
Power	Voltage/Frequency (V/Hz)	220V/50Hz	220V/50Hz	220V/50Hz	220V/50Hz
	Power (W)	160	200	364	513
	Current (A)	0.6	0.8	2.42	2.37
Material	Inside Material	Stainless Steel	Stainless Steel	Stainless Steel	Stainless Steel
	Outside Material	Color Sprayed Steel	Color Sprayed Steel	Color Sprayed Steel	Color Sprayed Steel
	Insulation	PURF	PURF	PURF	PURF
Size	Capacity (L/Cu.ft)	108/3.81	208/7.34	658/23.23	1008/35.59
	Blood Bags (450ml)	66	132	360	576
	Net/Gross Weight (Kg)	50/55	67/75	165/195	256/286
	Exterior Size (WxDxH) (mm)	522 x 600 x 1050	522 x 600 x 1550	1220 x 648 x 1885	1220 x 878 x 1885
	Interior Size (WxDxH) (mm)	432 x 462 x 478	432 x 462 x 978	432 x 462 x 478	1100 x 684 x 1325
	Package Size (WxDxH) (mm)	572 x 685 x 1070	572 x 685 x 1570	572 x 685 x 1070	1300 x 960 x 2080
Alarm	High/Low Temperature	Y	Y	Y	Y
	Power OFF	Y	Y	Y	Y
	Temperature Controller Malfunction	Y	Y	Y	Y
	Backup Battery Malfunction	Y	Y	Y	Y
	Ambient Temperature	10 ~ 32	10 ~ 32	10 ~ 32	10 ~ 32
	Backup Battery Alarm for Power Off	72h	72h	72h	72h
Accessories	Castor	Y	Y	Y	Y
	Outer Door/Type	1/Heating & Foam Glass Door	1/Heating & Foam Glass Door	2/Heating & Foam Glass Door	2/Heating & Foam Glass Door
	Inner Door	2	2	6	6
	Test Hole	1/25mm	1/25mm	1/25mm	1/25mm
	Thermal Printer	Y	Y	Y	Y
	Light	LED	LED	LED	LED
	Temperature Recorder	Optional	Optional	Optional	Optional
Other	Certifications	ISO9001, 13485, 14001, CE	ISO9001, 13485, 14001, CE	ISO9001, 13485, 14001, CE	ISO9001, 13485, 14001, CE

Specifications are subject to change without prior notice due to continuous product development

2~8°C

Explosion Proof Lab Refrigerators

2~8°C explosion proof refrigerator is specially designed to store medicines, vaccines, reagents and bio-medical products with anti explosion function.



MPC-5V416EX



Features

- ◆ Anti-explosion compressor and controller system to protect inner storage more safely.
- ◆ Inner SS 304 material
- ◆ Accurate temperature controller, ensure the inside temperature within 2~8°C and accuracy 0.1 °C.
- ◆ Specially designed forced-air cooling system, ensure frost-free cabinet and good temperature uniformity.
- ◆ Suggested ambient temperature: 10~32°C.
- ◆ Foamed door with for better heat protection
- ◆ Color spray steel plate inner chamber for friendly using and easy cleaning.
- ◆ 4 casters 2 with stopper and 2 adjustable feet for easy moving and fixation.
- ◆ 5 adjustable steel wire shelves for easy storing.
- ◆ 1 Standard test hole for convenient installation of temperature recorder
- ◆ Special designed service-free drainage system, ensure no water in the cabinet.
- ◆ Auto on/off LED light with manual switch on control panel.

Safety

- ◆ Safety door lock and controller setting password to prevent unauthorized access.
- ◆ Build-in back-up battery to display temperature and to operate audible and visual alarm system for up to 8 hours without AC power.
- ◆ Auto on/off cooling fan to prevent cold air from leaking out when the door is opening.
- ◆ Visual and audible alarm system: High/low temperature, power failure, sensor failure, door ajar
- ◆ Power failure protection: turn on delay of the cooling system after power failure.
- ◆ Controller error protection: the cooling system will remember the normal working cycle and keep working depending on this memory when controller or two sensor failed.
- ◆ Keyboard lock, password protection to avoid set parameter randomly.



	Model No.	MPC-5V416EX
Specifications	Shelf/Drawer	Shelves/5
	Cooling	Forced - Air Cooling
	Defrost	Frost Free
	Refrigerant	R290a
	Power Consumption (kWh/24h)	2.94
	Noise (db)	50
	Ambient Temperature (C)	10 ~ 32
	Temperature Range (C)	2~8
Cooling System	Compressor QTY	1
	Sensor	NTC
	Temperature Controller	Microprocessor
	Display	Digital Display
Power	Voltage/Frequency (V/Hz)	220V/50Hz
	Power (W)	290
	Current (A)	1.26
Material	Inside Material	Color sprayed steel
	Outside Material	Color Sprayed Steel
	Insulation	PURF
Size	Capacity (L/Cu.ft)	416/14.69
	Net/Gross Weight (Kg)	150/165
	Exterior Size (WxDxH) (mm)	785x552x1927mm
	Interior Size (WxDxH) (mm)	685x429x1380mm
	Package Size (WxDxH) (mm)	880x640x2100mm
Alarm	High/Low Temperature	Y
	Power failure	Y
	Thermostat failure	Y
	Backup Battery Malfunction	/
	Ambient Temperature	10 ~ 32
	Voltage abnormality alarm	/
	Door Ajar	Y
Accessories	Castor	Y
	Outer Door/Type	1/Heating & Foam
	Door Lock	1
	Test Hole	1/25mm
	USB Port	/
	Light	LED
Other	Certifications	ISO; CE

Specifications are subject to change without prior notice due to continuous product development

2~8°C Pharmacy Refrigerators

Trufrost pharmacy refrigerators are suitable for installation in drug stores, pharmaceutical companies, hospitals, epidemic prevention centers and clinics.



MPC-5V60G



MPC-5V100



MPC-5V316



MVC-360



MVC-800

Ergonomic Design

- ◆ Optimized space utilization design with multi-level and adjustable shelf height to accommodate storage requirement of pharmaceutical products of various kinds.
- ◆ Safety lock to prevent unauthorized access
- ◆ Caster design and leveling legs
- ◆ LED Interior light

Forced Air-Cooling System

- ◆ Advanced forced cooling system to keep inside temperature stable and uniform. Finned evaporator with special cycle design of forced air cooling system to assure no-frost inside

Reliability and Key Features

- ◆ High efficiency specialty compressor with known field reliability.
- ◆ Permanently lubricated cooling fan for safety and longevity.
- ◆ Forced-aircooling with optimized air distribution system designed.
- ◆ To achieve maximum temperature uniformity and stability.

- ◆ Optimized refrigeration system design for more effective cooling and Speedy recovery
- ◆ Temperature variation within $\pm 3^{\circ}\text{C}$
- ◆ Adjustable temperature range 2-8°C
- ◆ Microprocessor control, digital display, and temperature adjustment with an increment of 0.1°C
- ◆ Large digital display screen.

Characteristic Function

- ◆ Safety door lock design to avoid door ajar
- ◆ Big digital screen display for easy observation
- ◆ Optional testing hole
- ◆ Adjustable shelves
- ◆ Inner light design for a clear display

Safety

- ◆ Equipped with a complete temperature alarm system featuring audible buzzer and visible flashing light.
- ◆ Capable of alerting failures due to high and low temperature sensor error, door ajar, power failure and low battery.

Key Features:

- ◆ Advanced forced-air cooling system, large airflow with optimized air channels to guarantee inner temperature consistency. The special finned evaporator ensures no-frost and effective temperature management within $\pm 3^{\circ}\text{C}$, the adjustable temperature range: 2~8°C.
- ◆ Microprocessor control with digital temperature display with an accuracy of 0.1°C
- ◆ Multi-level and adjustable shelves for various dimensions of pharmaceutical products, making full use of the space.
- ◆ Inner light for clear display

Safety Control System:

- ◆ High/Low temperature alarm, thermostat malfunction alarm, door ajar alarm and power failure alarm. The start delay function provides protection of device.
- ◆ Audio and visual alarm
- ◆ USB port, optional temperature controller with thermal printer to track temperature curve
- ◆ Password protected lockable keyboard to prevent random parameter changes
- ◆ Optional remote control mode by Wi-Fi monitor

1~8°C Pharmacy Refrigerators

Trufrost Pharmacy Refrigerators are designed to store pharmaceuticals, medicines and other related products and are ideal for drug stores, pharmaceutical companies, hospitals, epidemic prevention centers and clinics.



	Model No.	MPC-5V60G	MPC-5V100	MPC-5V316	MVC-360	MVC-800	
Specifications	Shelf/Drawer	Shelves/2	Shelves/3	Shelves/5	Shelves/6	Shelves/8	
	Cooling	Forced - Air Cooling	Forced - Air Cooling	Forced - Air Cooling	Forced - Air Cooling	Forced - Air Cooling	
	Defrost	Auto	Auto	Auto	Auto	Auto	
	Refrigerant	R600a	R600a	R290	R290	R290	
	Power Consumption (kWh/24h)	0.84	1.15	1.78	-	-	
	Noise (db)	50	50	50	50	50	
	Ambient Temperature (C)	10 ~ 32	10 ~ 32	10 ~ 32	10 ~ 32	10 ~ 32	
	Temperature Range (C)	2~8	2~8	2~8	2~8	2~8	
	Cooling System	Compressor QTY	1	1	1	1	1
		Sensor	NTC	NTC	NTC	NTC	NTC
Temperature Controller		Microprocessor	Microprocessor	Microprocessor	Microprocessor	Microprocessor	
Display		Digital Display	Digital Display	Digital Display	Digital Display	Digital Display	
Power	Voltage/Frequency (V/Hz)	220V/50Hz	220V/50Hz	220V/50Hz	220V/50Hz	220V/50Hz	
	Power (W)	72	80	228	175	460	
	Current (A)	0.59	0.8	1.2	-	-	
Material	Inside Material	Color sprayed steel	HIPS	Color Sprayed Steel	Color Sprayed Steel	Color Sprayed Steel	
	Outside Material	Color Sprayed Steel	Color Sprayed Steel	Color Sprayed Steel	Color Sprayed Steel	Color Sprayed Steel	
	Insulation	PURF	PURF	PURF	PURF	PURF	
Size	Capacity (L/Cu.ft)	60/2.11	100/3.53	316/11.15	360/12.71	835/29.48	
	Net/Gross Weight (Kg)	33/37	35/38	92.5/100	75/82	142/152	
	Exterior Size (WxDxH) (mm)	495x450x710	505x510x875	660x555x1915	525x480x1524	1190x660x2030	
	Interior Size (WxDxH) (mm)	410x315x560	385x356x737	540x425x1380	-	-	
	Package Size (WxDxH) (mm)	558x510x760	580x580x940	720x680x2040	-	-	
Alarm	High/Low Temperature	Y	Y	Y	Y	Y	
	Power failure	Y	Y	Y	-	-	
	Thermostat failure	Y	Y	Y	-	-	
	Backup Battery Malfunction	/	/	/	/	/	
	Ambient Temperature	10 ~ 32	10 ~ 32	10 ~ 32	10 ~ 32	10 ~ 32	
	Voltage abnormality alarm	/	/	/	/	/	
	Door Ajar	Y	Y	Y	/	/	
Accessories	Castor	/	Y	Y	Y	Y	
	Outer Door/Type	1/Glass/Low-E	1/Glass door	1/Glass /Low-E	1/Glass /Low-E	1/Glass /Low-E	
	Door Lock	1	1	1	1	1	
	Test Hole	1/25mm	Optional	1/25mm	/	1/25mm	
	USB Port	/	/	Y	Y	Y	
	Light	LED	LED	LED	LED	LED	
	Temperature Recorder	Optional	Optional	Optional	Optional	Yes	
	Other	Certifications	ISO; CE	ISO	ISO; CE	ISO; CE	ISO; CE

Specifications are subject to change without prior notice due to continuous product development



FKS 471



Model No.	FKS 471
Dimensions (W*D*H)mm	595*653*1840
Net Capacity (L)	380
Cooling System	Ventilated
Temperature Range	1~8°C
No. of Shelves	3 + 1
Interior Light	Yes
Compressor	ZEL/ZEL
Display	Digital Display
Digital Thermostat	Dixell
Refrigerant	R134a/R600a
Casters	2 rear casters
Power Supply (V/HZ)	220/50
Lock	Yes
Certifications	ISO, CE

Key Features:

- ◆ White pre-painted solid door
- ◆ Digital Thermostat
- ◆ Lock and key
- ◆ Fan assisted cooling system
- ◆ Revisable self-closing door
- ◆ Roll bond plate with fan for chiller
- ◆ 7 layer of evaporator as shelves for freezer
- ◆ Two front adjustable feet, two rear wheels

2~8°C Ice Lined Refrigerator



YC-150EW



YC-275EW

Constant Temperature under Intelligent Control

High-precision computerized temperature control system: The cabinet has built-in high-sensitivity temperature sensors, ensuring a constant temperature inside it.

Security System

The well-developed audible & visual alarm system (with multiple audible & visual alarm functions, such as high temperature alarm, low-temperature alarm, sensor failure alarm, door opening alarm, power outage alarm) makes it safer for storage.

High-efficiency Refrigeration

Equipped with environmentally-friendly Freon-free refrigerant R290 and compressor supplied by an international famous brand, the refrigerator is characterized by fast refrigeration and low noise.

When there is power outage, the holdover time is up to 24 hours, which provides sufficient time for transferring samples.

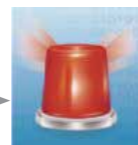
Human-oriented Design

Trufrost 2 ~ 8°C ice-lined refrigerators are specially designed for up to 43°C high ambient temperature zones. Start-delay time setting function (solving the problem of simultaneous startup of batch products after power failure);



Control Panel

4-digit LED high-brightness digital display enables; users to set temperature within a range; from 2~8°C, and the precision of temperature display reaches 0.1°C.



Security System

The well-developed alarm system (high and low temperature alarm, sensor failure alarm, power failure alarm, low battery alarm, etc.) makes it safer for storage;
Turn-on delay & stopping interval protection;
The door is equipped with a lock, preventing it from unauthorized opening;



Refrigeration System

Equipped with environmentally-friendly CFC Refrigerant R290 and compressor supplied by an international famous brand, the refrigerator is characterized by fast refrigeration and low noise.

When there is power outage, the holdover time is up to 24 hours, which provides sufficient time for transferring samples.



Human-oriented

The built-in door handle can prevent damage during transportation and save space.
There are 4 universal wheels and 2 leveling foot, which makes it can be moved and fixed easily.



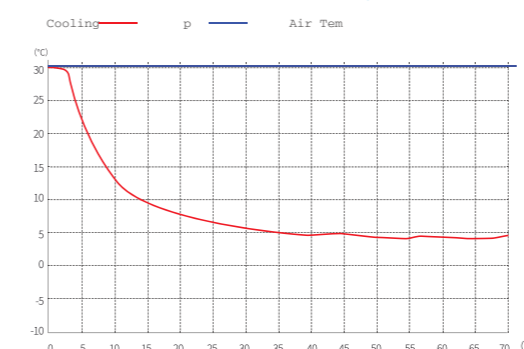
	Model No.	YC-150EW	YC-275EW
Specifications	Cabinet Type	Chest	Chest
	Capacity(L)	150	275
	Internal Size (W*D*H)mm	585*465*651	1019*465*651
	External Size (W*D*H)mm	811*775*929	1245*775*929
	Package Size (W*D*H)mm	875*805*991	1332*810*975
	NW/GW(Kgs)	76/93	87/94
Performance	Temperature Range	2~8°C	2~8°C
	Ambient Temperature	15-43°C	10-43°C
	Cooling Performance	5°C	5°C
	Climate Class	N	N
	Controller	Microprocessor	Microprocessor
	Display	Digital Display	Digital Display
Refrigeration	Compressor	1pc	1pc
	Cooling Method	Direct cooling	Direct cooling
	Defrost Mode	Automatic	Automatic
	Refrigerant	R290	R290
	Insulation Thickness(mm)	110	110
	External Material	SPCC epoxy coating	Sprayed steel plate
Construction	Inner Material	Stainless steel	Stainless steel
	Coated Hanging Basket	1	1
	Door Lock with Key	Yes	Yes
	Backup battery	Yes	Yes
	Casters	4 (2 caster with brake)	4 (2 caster with brake)
	Temperature	High/Low temperature	High/Low temperature
Alarm	Electrical	Power failure, Low battery	Power failure, Low battery
	System	Sensor error	Sensor error
	Power Supply (V/Hz)	220/50	220/50
Electrical	Rated Power (W)	298	-
	Input Power (W)	326	275
	Power Consumption (KWh/24h)	0.8	0.45
	Rated Current(A)	1.48	1.25
	Certifications	ISO, CE	ISO, CE

*The model, parameters and performance specified in this brochure may be changed without prior notice because of product upgrading.
*There may be differences between the product images shown in this brochure and the actual products. When you are buying any product, please check the actual product

Scope of Application

Suitable for storage of biological products, vaccines, drugs, reagents, etc. Suitable for use in pharmacies, pharmaceutical factories, hospitals, centers for disease prevention & control, clinics, etc.

Performance Data / Cooling Curve



0 ~ 10°C Traditional Medicine Coolers

In the world of refrigeration, Copper is the Gold Standard. The new Copper Plus series visi coolers from Trufrost are a cut above the rest. These coolers are built with copper in the compressor and forced air evaporator and condenser with copper tubes. Other features include a special Low-E glass on the doors and durable aluminium door frames tested for 3,00,000 openings/closings. These innovative cooling displays are available in 380 to 1200 litre capacities and single or double door variants.



VC-451 Copper Plus



VC-1251 Copper Plus

0 ~ 10°C Medical Refrigerators & Freezers in Stainless Steel

These Trufrost Reach-Ins are available as Chillers or Freezers, and come with 1, 2 or 4 door options. Available in a choice of two refrigeration systems - Ventilated or Static with fan, these are offered in capacities ranging from 600 - 1350 litres. There are different models to address the wide-ranging needs.



Available Models
G 600 TN



Available Models
G 600 TNM, G 600 BTM



Available Models
G 1200 TNM, G 1200 BTM



Available Models
GN 740 TNG, GN 740 BTG,
GN 1480 TNG, GN 1480 BTG

Technical Specifications - Copper Plus Series



Specification	Gross Volume (Litres)	Dimensions w x d x h (mm)	Temperature Range	Power (w)	Lock	Defrost	No. of Lids / Doors	No. of shelves	Interior Light	Wheels / Castors	No. of Compressors	Refrigerant
VC-451 Copper Plus	410	583 x 715 x 1792	2 - 8°C	284	Yes	Automatic	1	4	LED light	Yes	1	R134a
VC-1251 Copper Plus	1200	1152 x 735 x 2187	2 - 8°C	466	Yes	Automatic	2	10	Yes / 2LEDs	Yes	1	R134a

Electricals: 220V/50Hz/1 Phase Specifications are subject to change without prior notice due to continuous product development

Model	Volume (L)	Door type	Shelves	Power	Dimensions (wxdxh) mm	Temperature range	Refrigerant	No. of Compressors
VC-1225 Premia	1225	2 Hinge	10	420W	1215x710x2050	+1°C ~ +10°C	R134a	1
VC-1250 Premia	1250	2 Hinge	10	412W	1260x750x2092	+1°C ~ +10°C	R134a	1

Electricals: 220V/50Hz/Single Phase
Specifications are subject to change without prior notice due to continuous product development
Working condition for open chillers/glass door freezer is class 3 (Room Temp. 25°C and 60%RH)

Technical Specifications



Product	Model	Cooling System	Product Dimensions W*D*H (mm)	Volume (Litres)	GN (530 x 325mm) compatibility	Product Weight (Kgs.)	No. of Doors / Drawers	No. of Shelves	Temperature Range (°C)	Refrigerant	Input Power (Watts)
Reach In Refrigerators	G 550 TNM	Ventilated	680*760*1965	550	-	105	2	3	2 ~ +10	R 134a	350
	G 600 TN	Ventilated	680*710*2010	600	-	83	1	5	2 ~ +10	R 134a	305
	G 600 TNM	Ventilated	680*710*2010	600	-	115	2	3	2 ~ +10	R 134a	220
	G 1200 TNM	Ventilated	1340x710x2010	1200	-	152	4	6	-2 ~ +8	R 134a	465
Reach In Freezers	G 600 BTM	Ventilated	680*710*2010	600	-	126	2	3	-22 ~ -18	R404A	615
	G 1210 BTM	Ventilated	1200*745*1950	1200	-	135	4	6	-22 ~ -17	R404A	741
Reach In Refrigerators with Glass Door	GN 740 TNG	Ventilated	740*830*2010	700	GN2/1	-	1	3	2 ~ +10	R 134a	-
	GN 740 BTG	Ventilated	740*830*2010	700	GN2/1	-	1	3	-15 ~ -18	R404a	-
	GN 1480 TNG	Ventilated	1480*830*2010	1410	GN2/1	-	2	6	2 ~ +10	R 134a	-
	GN 1480 BTG	Ventilated	1480*830*2010	1410	GN2/1	-	2	6	-15 ~ -18	R404a	-

Electricals: 220V/50Hz/1 Phase Specifications are subject to change without prior notice due to continuous product development

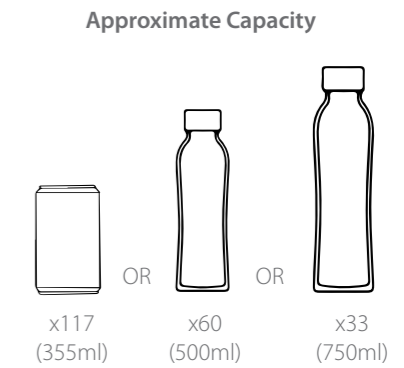
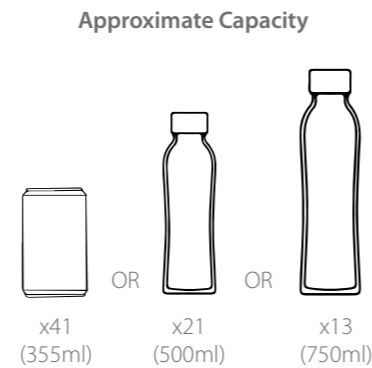
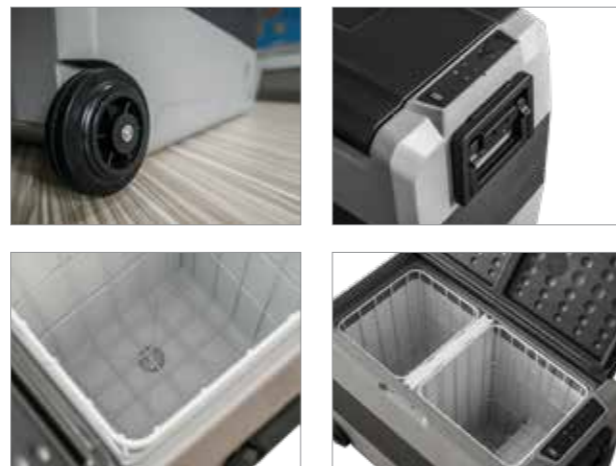
-20°C
~ **+20°C**

Mobile Freezers/Coolers Combo

The T36 and TWW-95 portable freezer/cooler combos come with the latest two temperature control system function. They are great portable refrigerator/freezers to meet a variety of refrigeration needs be it for transportation of bio-medical products or carrying refrigerated or frozen foodstuff for a picnic, or on the road camping for months.



T-36, T-50



TWW-95



Key Features:

- ◆ Detachable battery lasts 4 - 24 hours for outdoor activity
- ◆ Dual compartments with individual temperature control
- ◆ LG compressor for superior cooling performance
- ◆ Three stage battery protection system prevents vehicle run out of battery
- ◆ Car & home dual use (DC/AC)
- ◆ Shockproof and durable design for handling rocky road
- ◆ Wire storage baskets, interior drain plug and LED light
- ◆ LED digital display control panel for easy operation
- ◆ Big wheels and heavy telescoping handle
- ◆ Reverse/removable fridge door design
- ◆ Safe to run less than a 45-degree angle in short time
- ◆ Mobile phone app control at your fingertips for convenience
- ◆ Classic fridge slide ensures easy access to cooler, and makes it stays in position when you are driving in rough road.

Key Features:

- ◆ DUAL TEMPERATURE CONTROL: Detachable sensor divider can switch single temperature zone to two separate temperature zone (Fridge/freezer) in one refrigerator.
- ◆ FREEZES WITHOUT ICE: -20°C to 20°C powerful chilling performance.
- ◆ CAR BATTERY PROTECTION: With temperature memory function and Three stages battery protection system prevents vehicle run out of battery.
- ◆ INTERIOR: Built-in LED light, interior drain plug for easy clean, and wire storage basket
- ◆ EXTERIOR: Magnetic foldable handle, USB Port, reliable wheels for easy carrying, digital display control panel, removable fridge door design for full access.
- ◆ High performance compressor: Name compressor offers superior cooling performance.
- ◆ Fit anywhere: Car/Jeep/Truck/Home/Dorm/Cottage/Garage/ RV/Boat/Outdoor (DC/AC).
- ◆ Rugged design: Shockproof and durable design for handling rocky road. Safe to run less than a 45° angle in short time
- ◆ Quiet operation: Less than 45db, like living in quiet suburb.
- ◆ ENERGY SAVING (MAX & ECO MODE): Two different modes can be adjusted as needed. The compressor will stop operating when the freezer reaches the set temperature. The compressor will restart to operating when the temperature in the box has risen from 6°F to 9°F.



Technical Specifications

Model	T-36	T-50	TWW-95
Cooling type	Forced Air Cooling	Forced Air Cooling	Forced Air Cooling
Defrost	Manual	Manual	Manual
Refrigerant	R134a	R134a	R134a
Noise level(db)	45	45	45
Ambient temperature	-40°~65°C	-40°~65°C	-40°~65°C
Temperature range	-20°~20°C	-20°~20°C	-20°~20°C
Sensor type	NTC	NTC	NTC
Temperature controller	Digital Control	Digital Control	Digital Control
Display	LCD Display	LCD Display	LCD Display
Voltage/Frequency	DC12/24v; AC 220~240v	DC12/24v; AC 220~240v	DC12/24v; AC 220~240v
Power	60W	60W	60W
Electricity	DC 5.0/2.5A; AC1.5A~0.5A	DC 5.0/2.5A; AC1.5A~0.5A	DC 6.0/3.0A; AC1.5A~0.7A
Capacity	36L	50L	95L
Net/Gross weight	14KG /16KG	15.5KG /17.5KG	27KG /29KG
Dimensions (W*D*H)	360*723*365 mm	360*723*458 mm	571*896*462 mm
Qualifications	CE, CB, ROHS, ISO 9001:2015, ISO 13485:2016, FDA, WHO-GMP	CE, CB, ROHS, ISO 9001:2015, ISO 13485:2016, FDA, WHO-GMP	CE, CB, ROHS, ISO 9001:2015, ISO 13485:2016, FDA, WHO-GMP

Specifications are subject to change without prior notice due to continuous product development

2~8°C Medical Vaccine Carriers

Trufrost Vaccine Carriers are specialised ice boxes used in the transport and/or storage of vaccines where power supply/refrigeration poses a challenge. The carefully crafted and placed icepacks in the already insulated boxes are designed to store vaccines and/or life saving medicines at optimal temperatures even at high ambient temperatures 43°C for up to 48 hours.



KPR-13, KPR-36



Shoulder Strap



Thermometer



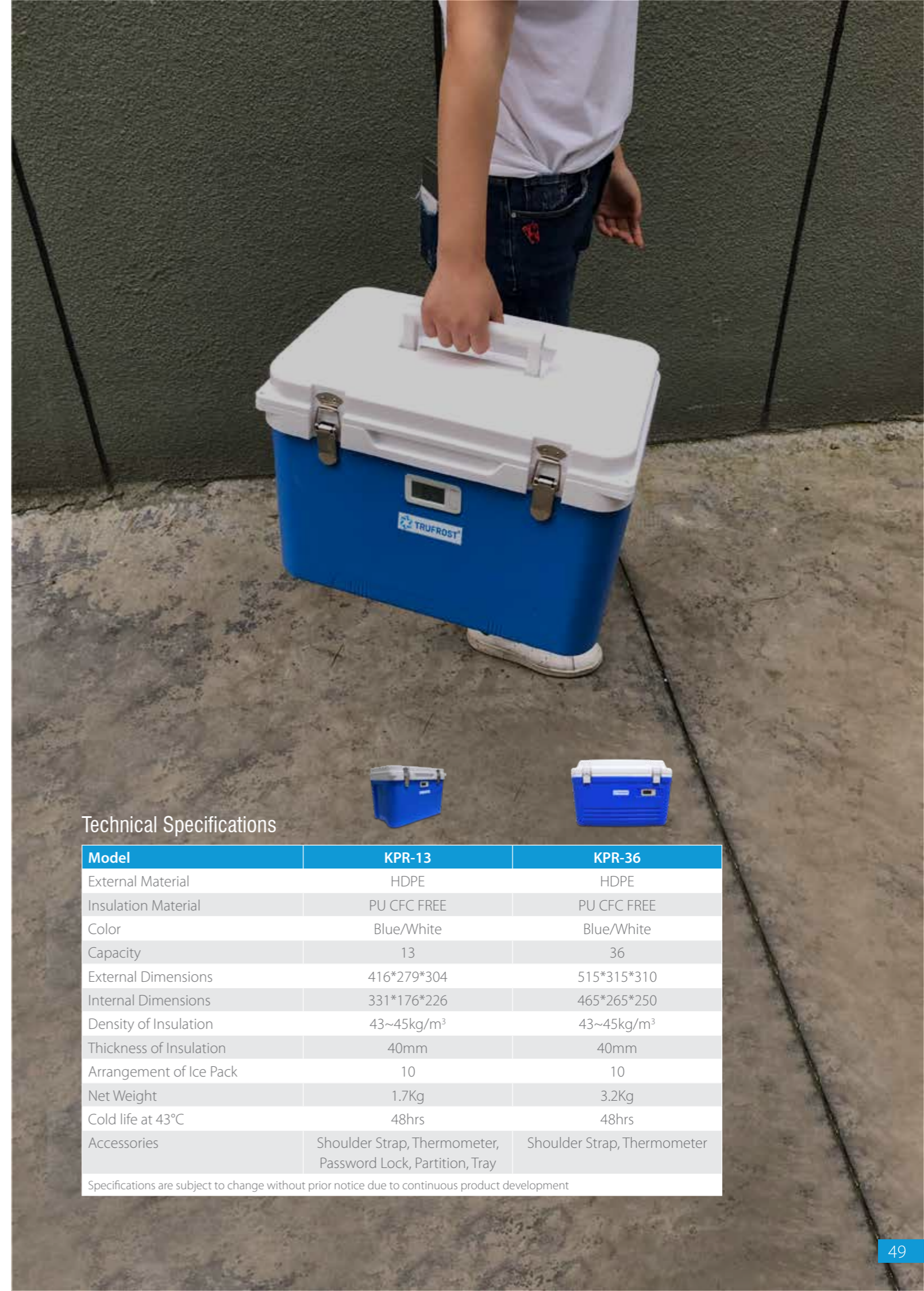
Password Lock



Partition

Key Features:

- ◆ Easy to carry handle and removable shoulder strap
- ◆ Internal body in food grade polypropylene
- ◆ Effective protection against temperature loss with seal ring and stainless steel latches
- ◆ Highly effective 40 mm polyurethane foam insulation
- ◆ Two models with 13 and 36 litre capacities



Technical Specifications

Model	KPR-13	KPR-36
External Material	HDPE	HDPE
Insulation Material	PU CFC FREE	PU CFC FREE
Color	Blue/White	Blue/White
Capacity	13	36
External Dimensions	416*279*304	515*315*310
Internal Dimensions	331*176*226	465*265*250
Density of Insulation	43~45kg/m ³	43~45kg/m ³
Thickness of Insulation	40mm	40mm
Arrangement of Ice Pack	10	10
Net Weight	1.7Kg	3.2Kg
Cold life at 43°C	48hrs	48hrs
Accessories	Shoulder Strap, Thermometer, Password Lock, Partition, Tray	Shoulder Strap, Thermometer

Specifications are subject to change without prior notice due to continuous product development

20~24°C Blood Platelet Incubators

The blood platelet incubator is widely used to store blood platelets, biological reagents and chemical products. They are used by hospitals, blood banks, research institutes, laboratories and universities.



MDC-5



MDC-10

Key Features:

- ◆ High accuracy sensor
- ◆ Microprocessor control with inner temperature controlled at 22°C ±2°C
- ◆ Efficient refrigeration system with controlled fan and forced cycle mechanism ensures temperature consistency inside the cabinet
- ◆ Large digital display for easier observation
- ◆ Disinfection by UV light that shuts off automatically when door is opened to prevent harm to human body
- ◆ Double insulated glass door makes observation easy
- ◆ High quality oscillation slide rail for longevity as well as low noise

Safety Control System:

- ◆ Alarm mode monitors ambient temperature and system state to ensure safety and reliability of storage conditions.
- ◆ High/Low temperature alarm, thermostat malfunction alarm, power failure alarm in 72 hours, battery back-up malfunction alarm and door ajar alarm
- ◆ Audio and visual alarm



	Model No.	MDC-5	MDC-10	
Specifications	Shelf/Drawer	Drawer	Drawer	
	Cooling Method	Forced - Air Cooling	Forced - Air Cooling	
	Defrost	No Frost	No Frost	
	Refrigerant	R134a	R134a	
	Power Consumption (kWh/24h)	2.69	4.4	
	Noise (db)	49	50	
	Ambient Temperature (C)	10 ~ 32	10 ~ 32	
	Temperature Range (C)	20 ~ 24	20 ~ 24	
	Cooling System	Compressor Brand/QTY	Embraco/1	Embraco/1
		Sensor	NTC	NTC
Temperature Controller		Microprocessor	Microprocessor	
Display		Digital Display	Digital Display	
Power	Voltage/Frequency (V/Hz)	220V/50Hz	220V/50Hz	
	Power (W)	197W	280W	
	Current (A)	0.9	1.27	
Material	Inside Material	SUS	SUS	
	Outside Material	Color Sprayed Steel	Color Sprayed Steel	
	Insulation	PUF	PUF	
Size	Capacity (L/Cu.ft)	5	10	
	Blood Bags (450ml)/Drawer	10/5 Layers	20/10 Layers	
	Net/Gross Weight (Kg)	60/65	80/86	
	Exterior Size (WxDxH) (mm)	522 x 600 x 1050	522 x 600 x 1300	
	Interior Size (WxDxH) (mm)	427 x 360 x 467	432 x 462 x 728	
	Package Size (WxDxH) (mm)	585 x 700 x 1205	588 x 677 x 1440	
	Alarm	High/Low Temperature	Y	Y
Power Failure		Y	Y	
Sensor Malfunction		Y	Y	
Low Battery		Y	Y	
Door Ajar		Y	Y	
Accessories	Castor	Y	Y	
	Outer Door/Type	1 (Foamed Glass Door)	1 (Foamed Glass Door)	
	Test Hole	Optional	Optional	
	Light	UV Light	UV Light	
	Temperature Recorder	Optional	Optional	
Other	Certifications	ISO9001, 13485, 14001, CE	ISO9001, 13485, 14001, CE	

Specifications are subject to change without prior notice due to continuous product development



Ice Makers with Built-In Storage Bin

Highly relevant for commercial outlets where space is at a premium, the self contained Trufrost Ice Machines present the best options for research labs and bio-medical, life sciences and healthcare applications and can also be used for undercounter applications.

- ◆ Contemporary, elegant design available in ice production capacities ranging from 18 to 95 kg per day.
- ◆ Insulated ice storage bin and door minimize air condensation and water formation.
- ◆ IC 18BW also comes with a cold water dispensing option
- ◆ IC 35BWA & IC 50BWA models have the option of accommodating a bottled water jar on top
- ◆ IC-35BWA, IC-50BWA & IC-100 models are suitable for undercounter applications.



IC-18BW

IC-35BWA, IC-50BWA

IC-100



Modular Ice Machines

Modular ice machines need separate storage bins. Trufrost modular ice machines come with a vertical evaporator and are specially designed for research labs and bio-medical, life sciences and healthcare applications. They combine maximum energy yield whilst ensuring low investments and operating costs.

- ◆ Modular Ice Machines with high production capacity (220 to 950 kg per day).
- ◆ Low energy consumption
- ◆ Low water consumption per kg of ice produced
- ◆ Compatible Ice Storage Bins available separately at an extra cost.



IC-220
on ISB-150 Bin

IC-350, IC-460
on ISB-125 / ISB-170 Bin

IC-950
on ISB-315 Bin

Technical Specifications - Ice Machines



Model	Rated Capacity / 24 hrs.*	Ice Storage Capacity	Cube Shape / Size	Refrigerant	Electricals	Power (w)	Dimensions wxdxh (mm)	Compatible Storage Bin
IC 18 BW	18 kgs.	2.2 kgs.	Bullet / Ø 35*39 mm	R134a	220V/50Hz	-	357*423*452	-
IC 35 BWA	30 kgs.	15 kgs.	Dice / 28*28*23 mm	R404a	220V/50Hz	280	500*450*830	-
IC 50 BWA	50 kgs.	18 kgs.	Dice / 28*28*23 mm	R404a	220V/50Hz	320	500*590*830	-
IC 100	98 kgs.	45 kgs.	Dice / 28*28*23 mm	R404a	220V/50Hz	600	660*680*930	-
IC 220	220 kgs	150 kg	Dice / 28*28*23 mm	R404a	220V/50Hz	850	560*830*1600	ISB-150
IC 350	350 kgs.	220 kg	Dice / 28*28*23 mm	R404a	220V/50Hz	1200	760*830*1600	ISB-125 / ISB-170
IC 460	460 kgs.	220 kg	Dice / 28*28*23 mm	R404a	220V/50Hz	1600	760*830*1800	ISB-125 / ISB-170
IC 950	950 kgs.	460 kg	Dice / 28*28*23 mm	R404a	380V/50Hz	4500	1220*930*1980	ISB-460

* At 10°C incoming water and 10°C air temperature

Height & width for IC 220/350/460/950 is with the suggested storage bin

Specifications are subject to change without prior notice due to continuous product development

Lab Use Flake Ice Machines

Flake ice is greatly preferred for its small size and soft texture for therapeutic use in healthcare facilities. Flake ice is also perfect for use in research labs and bio-medical, life sciences and healthcare applications. Trufrost offers Flake Ice Machines in production capacities ranging from 20 to 200 kg per day.



IF-20



IF-50, IF-70



IF-120, IF-200



Lab Use Modular Flake Ice Machines

Trufrost Modular Ice Flake Machines are available in production capacities of 500 & 1000 kg per day and have a low water and energy consumption.



IF-300, IF-500
on ISB 220 Bin



IF-1000
on ISB 460 Bin

Technical Specifications



Model	Rated Capacity / 24 hrs.*	Ice Storage Capacity	Cube Shape / Size	Refrigerant	Electricals	Power (w)	Dimensions wxdxh (mm)	Compatible Storage Bin
IF 20	20 kgs.	10 kgs.	Granular Flakes	R 134a	220V/50Hz	280	330*470*605	-
IF 50	50 kgs.	15 kgs.	Granular Flakes	R 134a	220V/50Hz	380	400*540*700	-
IF 70	70 kgs.	25 kgs.	Granular Flakes	R 134a	220V/50Hz	460	400*510*845	-
IF 120	120 kgs.	40 kgs.	Granular Flakes	R 134a	220V/50Hz	550	500*611*950	-
IF 200	200 kgs.	60 kg	Granular Flakes	R134a	220V/50Hz	1040	650*740*1100	-
IF 300	300 kgs.	220 kg	Flake Ice	R404a	220V/50Hz	1400	760*830*1780	ISB 220
IF 500	500 kgs.	220 kg	Flake Ice	R404a	220V/50Hz	2400	760*830*1890	ISB 220
IF 1000	1000 kgs.	460 kg	Flake Ice	R404a	380V/50Hz	4800	1220*930*2060	ISB 460
IF 1500	1000 kgs.	400 kg	Flake Ice	R404a	380V/50Hz	7300	1320*1250*2180	-
IF 2000	2000 kgs.	500 kg	Flake Ice	R404a	380V/50Hz	8500	1500*1380*2340	-
IF 2500	2500 kgs.	500 kg	Flake Ice	R404a	380V/50Hz	9800	1500*1380*2500	-

* At 10°C incoming water and 10°C air temperature
Height & width for IF 300/500/1000 is with the suggested storage bin

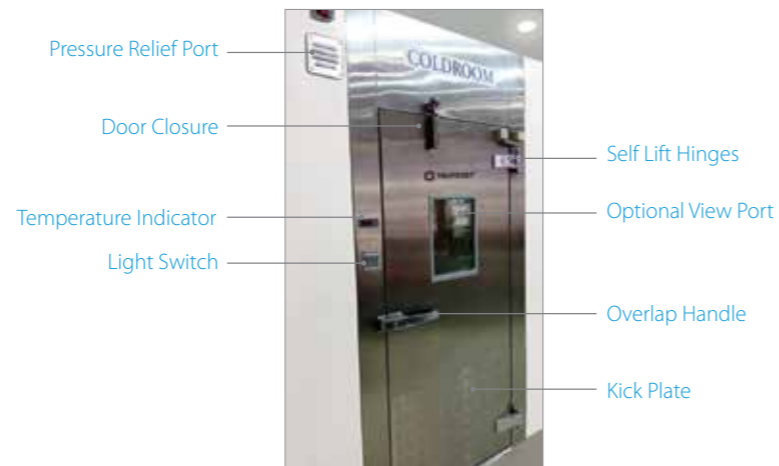
Specifications are subject to change without prior notice due to continuous product development



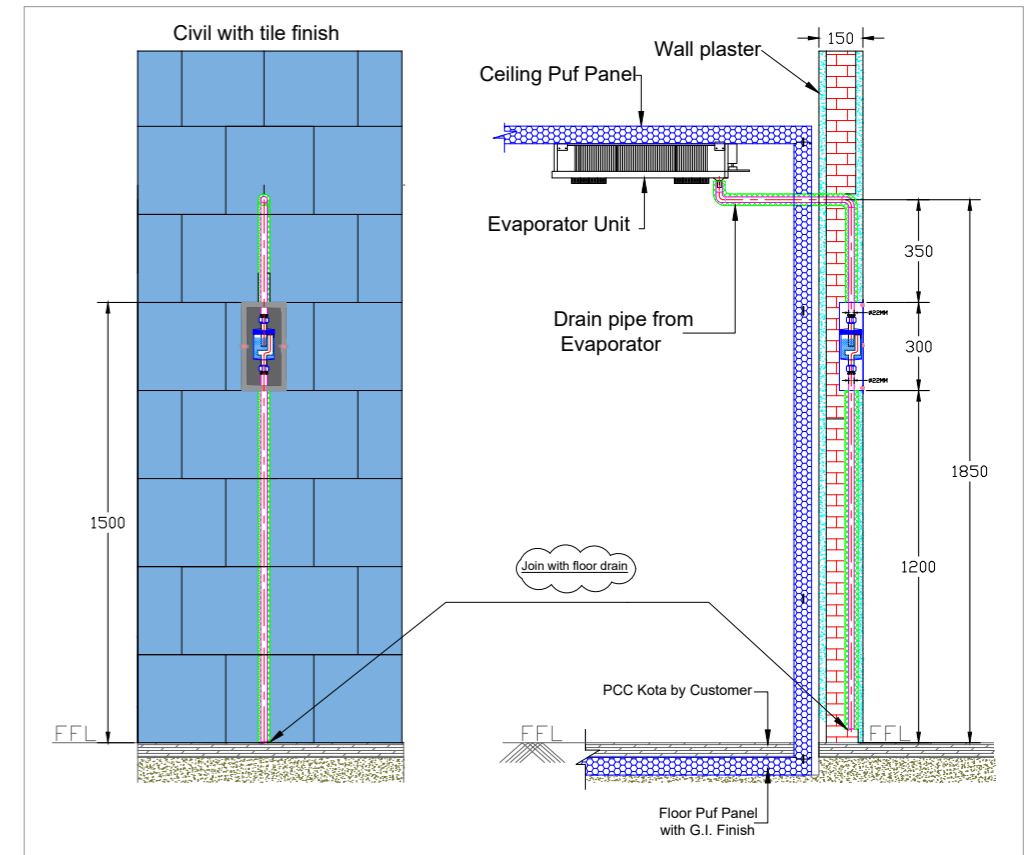
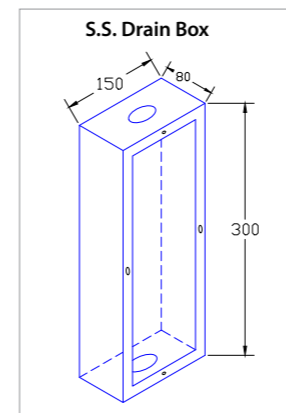
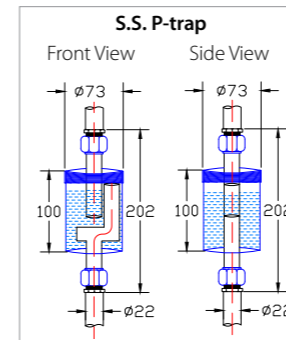
Preservation
without compromise

Walk-in Coldrooms

We specialize in preservation & storage of products ranging for research laboratories, medicines & vaccinations and other pharmaceutical applications. Be it small walk-in coolers & freezers, or large refrigerated warehouses, our Coldrooms are easy to install, use, and maintain, keeping you up and running from the very start. We've devoted ourselves to creating products and solutions that are extremely dependable. You can count on Trufrost as a genuine partner.



Flush door with accessories



Wall Drain System

Key Features



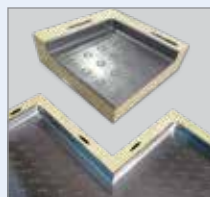
Cam Locking with Gaskets

Our camlocks ensure strong, perfect alignment of all joints. Food-grade PVC gaskets make them neat & leak-proof and are a superior replacement of silicon sealants.



Rounded Corners

Trufrost gives you the option of rounded corners on wall to wall, wall to ceiling (only imported) and wall to floor sections that enables easy cleaning of corners and utmost hygiene in your cold room.



Custom Built Panels

Trufrost PUF Panels can be made to suit your layout design and site conditions. Our sizes are flexible and use L, T and + shape panels to ensure the cold rooms are structurally strong, rivet-free and hygienic.



Inside and Outside Ramp

Site conditions are often not perfect but you may still need to move in and out of cold rooms frequently. Trufrost custom designed ramps ensure that you cart out your foodstuff on trolleys, unhindered.

Key Features Continues...



Sliding Doors

Perfect solution for tight alleys but a wider opening requirement. Trufrost offers heavy duty sliding doors with highly durable, European accessories.



Shelving System

Trufrost offers shelving for cold rooms with option of SS304 or SS201. We offer you optimal storage system to maximise space utilisation in a coldroom to suit different budgets.



Control Panel (with I.O.T.)

Our control panels are designed to maximise the performance of all types of refrigeration systems. Optional features of remote monitoring and BMS compatibility are available.



LED lighting (optional)

Energy saving LED lighting options designed for damp, wet, walkin coolers or freezers applications are available from Trufrost.



Variety of doors & accessories options

- ◆ Hinge Doors
- ◆ Sliding Doors
- ◆ High Speed Roll-up Doors
- ◆ Flip-flap Doors
- ◆ Sectional Doors
- ◆ Service Doors
- ◆ Dock Seal
- ◆ Dock Levelers





Rack System



Floor Mounted Evaporator

Refrigerated Warehouses

Team Trufrost has a demonstrated capability to execute large refrigeration projects. Regardless of how big your project is, we can help you set up your refrigerated warehouse within defined timelines and budgets. Our team has a rich experience in the construction of refrigerated warehouses for food and agribusiness sectors and in areas such as:

- ◆ Fruit and vegetable storage
- ◆ Large poultry, meat and sea food warehouses
- ◆ Refrigerated shipping & logistics



Project Management

Large warehouses, distribution centres and other cold-storage applications demand quiet, efficient and dependable operation. We can help you transform your plans with a mark of professionalism. Our refrigerated dock areas will maintain your product temperature requirements at all times. And our precisely engineered refrigeration systems are crafted optimally with insulated panels and a variety of door options. In short, our project management team ensures that you can derive an optimal performance from the entire refrigerated warehouse.



Energy-efficient Refrigeration Units

Presenting Trufrost Refrigeration Systems with temperatures ranging from -86°C to +22°C. These world-class Condensing units and Evaporator units are the perfect complement to your Coldroom Panels.

Salient Features :

- ◆ Rack systems with option of **inverter compressor**
- ◆ Imported & locally manufactured energy-efficient compressors
- ◆ Designed for tropicised conditions (Class T)
- ◆ Stainless steel or pre-painted aluminium evaporators
- ◆ Option of hermetic scroll & semi-hermetic compressors
- ◆ Option of remote monitoring for BMS compatible HACCP controller



Taper Evaporator



Slimmer Evaporator



Condensing Unit



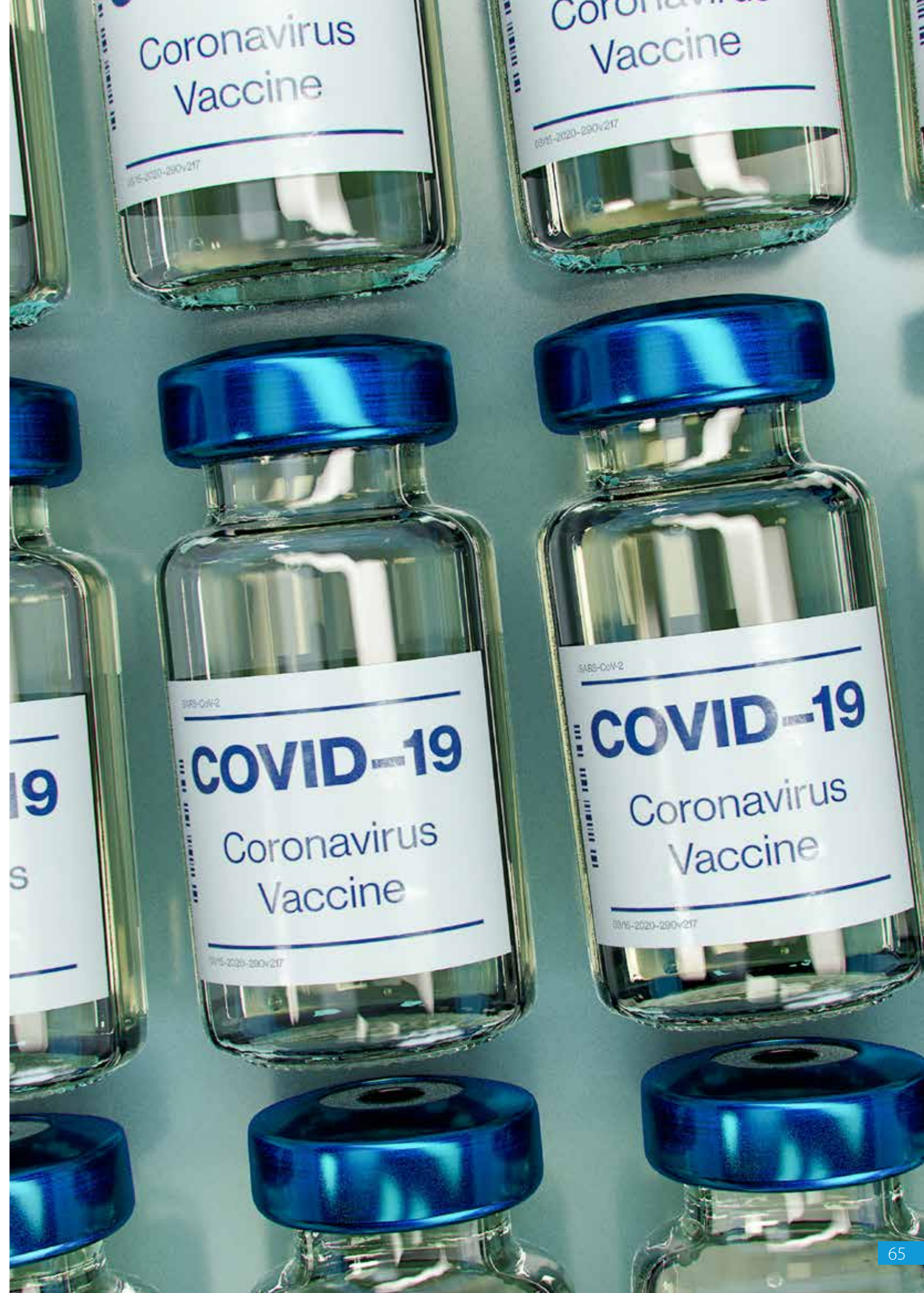
Inverter Condensing Unit

Technical Specifications

Model No. Cond. Unit	Model No. Evapo. Unit	Refrigeration Capacity BTU/Hr.	Max. Room Volume (CFT)	Max. Room Area with 8'Ht. (Sq.Ft.)	Temp. Range (C)	Max. Loading (Kgs./Day)	Loading Temp. (C)	Ambient (C)	Power Supply (V/Ph/Hz)	Power* Consumption (Kw)	Defrosting (Type)	Approx. weight (Kgs.)
TH-AH-008-21	Slimmer-S2-08-AL	8000	525	65	2 to 6	300	30	38 to 43	230/1/50	1.6	Off-cycle	70
TH-AH-012-21	Slimmer-S3-12-AL	12000	1000	125	2 to 6	580	30	38 to 43	230/1/50	2	Off-cycle	90
TH-AH-015-21	Slimmer-S4-16-AL	15000	1400	175	2 to 6	810	30	38 to 43	230/1/50	2.5	Off-cycle	110
TH-AH-019-23	Slimmer-S5-20-AL	19000	1900	240	2 to 6	1115	30	38 to 43	400/3/50	3	Off-cycle	148
TH-AH-021-23	Boxer-K34-21-AL	21000	2200	275	2 to 6	1278	30	38 to 43	400/3/50	3.4	Off-cycle	150
TH-AH-036-23	Boxer-K44-36-AL	36000	4000	500	2 to 6	2320	30	38 to 43	400/3/50	5.3	Off-cycle	170
TH-AH-041-23	Boxer-K44-42-ALX	41000	4700	580	2 to 6	2700	30	38 to 43	400/3/50	5.8	Off-cycle	180
TH-AS-060-23	Hyper-H44-60-PPX	60000	7000	875	2 to 6	4065	30	38 to 43	400/3/50	7.6	Off-cycle	220
TH-AS-080-43	Hyper-H45-80-PPX	80000	9000	1125	2 to 6	5225	30	38 to 43	400/3/50	9	Off-cycle	250
TL-AH-005-41	Cuber-S2-05E-AL	5000	240	30	-16 to -18	85	-10	38 to 43	230/1/50	1.5	Electric	78
TL-ASH-007-43	Boxer-K23-07E-ALX	7000	800	100	-18 to -22	280	-10	38 to 43	400/3/50	2	Electric	85
TL-ASH-009-43	Boxer-K24-09E-ALX	9000	1200	150	-18 to -22	425	-10	38 to 43	400/3/50	2.6	Electric	88
TL-ASH-012-43	Boxer-K34-12E-AL	12000	1500	188	-18 to -22	525	-10	38 to 43	400/3/50	3.5	Electric	125
TL-ASH-016-43	Boxer-K43-17E-AL	15500	2000	250	-18 to -22	700	-10	38 to 43	400/3/50	4.3	Electric	150
TL-ASH-020-43	Boxer-K44-20E-ALX	20000	3000	375	-18 to -22	1050	-10	38 to 43	400/3/50	6	Electric	190

Basis of Design : (A) Loading will be 50 Kgs / Sq.ft. / day for Chiller room and 30 Kgs / Sq.ft. / day for Freezer room. (B) Door Openings : 3 to 5 / Hr. (C) Refrigerant : R22 / R407C / R404a / R134a for TH range and R-404a for TL range of equipment. (D) Supply Voltage : 200V - 240V for single phase while 380V - 440V for three-phase supply, otherwise use voltage stabiliser. (E) TH range offered for +22°C to +1°C is with Hermetic Danfoss / Emerson / Techemseh compressor, while TL range is offered for -1°C to -86°C with Hermetic Emerson for small capacities and Semi-Hermetic Bitzer / Dorin / Emerson compressors for higher capacities.

Trufrost reserves the right to change the specifications without prior notice



Trufrost Gnt Biobank



▶ Trufrost Cryopreservation Storage Equipment

Our cryopreservation storage solutions offer scientists outstanding temperature performance, low operating costs and dependable protection even when electricity is lost. Samples remain protected much longer during power outages than alternative technologies.

Stainless Steel Vapor Phase Liquid Nitrogen Tanks

The GNTBIO BANK series offers users a safer and smarter ultra-low temperature liquid nitrogen storage system with a capacity of 15,600-9,450 2ml tubes and a large off-bore open-ended design for easy storage of samples. Compatible with both gas phase and liquid phase storage modes, the system ensures uniform and stable temperatures throughout the entire tank, even when the lid is open for long periods of time. The temperature difference between the entire storage area and the top of the freezing rack can be as low as -190°C.

● Features

- Compatible with both gas and liquid phase storage modes, with a wide range of volumes available.
- Compatible with both manual and automatic refill control modes for a more flexible operating experience
- Advanced temperature and level monitoring and alarm system for network monitoring
- Hot gas bypass design reduces the effect of temperature fluctuations inside the tank to ensure sample safety
- Support data backup and saving, exportable for printing
- One-touch defogging for easy sample finding and retrieval

AI Control system

The intelligent monitoring terminal of liquid nitrogen tank has data storage function; supports compatible with various mainstream communication protocols; adopts 10-inch or 7-inch LCD intelligent touch screen to visually display the operating status and parameters of liquid nitrogen tank in the form of chart. Terminal can automatically / manually open the inlet solenoid valve for liquid nitrogen supplement, real-time monitoring level height, tank temperature, solenoid switch status and running time, with authority and security password protection, various alarm functions (level alarm, temperature alarm, over-limit alarm, sensor fault alarm, cover overtime alarm, rehydration alarm, SMS remote alarm, power alarm), more monitoring signal to the central computer unified centralized monitoring and control.



● System advantages

- Real-time display of temperature and LN2 level data
- High precision platinum resistance temperature sensors
- Compatible with differential pressure and capacitive LN2 level sensors
- Automatic liquid nitrogen filling function
- Wired/wireless/WiFi/4G communication options
- Choice of three operating modes: gas phase, liquid phase and manual
- Remote alarm function by phone / SMS / WeChat / email
- Local audible and visual alarm function
- System authority hierarchy management
- Automatic recording of operating data
- Local data is stored permanently and can be exported via USB
- Cloud-based data backup function
- Backup power and UPS power



MODEL	YDD-370-320P	YDD-460-320P	YDD-800-445P	YDD-800-445R	YDD-1000-500P	YDD-1800-635R
Maximum storage capacity						
1.2&2ml vials	15600	19500	39200	42000	55500	94500
RACKS (100 per box)	12	12	24	26	32	60
RACKS (25 per box)	4	4	16	16	20	12
RACK LAYERS	12	15	14	14	15	15
Performance						
LN ₂ VOLUME (L)	370	460	797	797	1000	1800
LN ₂ under the tray(L)	55	55	133	133	200	295
Static LN ₂ retention (Vapo phase)	11	11	20	20	25	30
Static LN ₂ retention (Liquid phase)	74	92		118	125	177
Parameters						
Inside Neck Dia.(mm)	320	320	445	445	500	635
Effective internal height (mm)	780	875	780	780	870	870
Internal diameter (mm)	730	730	980	980	1130	1390
Overall height (mm)	1400	1450	1605	1605	1680	1685
Rack lift height (mm)	920	1118	1052	1052	1118	1118
Min, Door width(mm)	815	815	1090	1090	1300	1565
N.W (kg)	258	283	355	358	580	805
Full load weight (kg)	559	657	1004	1007	743	2207
Blood bag/levels of blood bag racks/ number of blood bag racks						
7910S/U (25ml)	1224/6/204	1836/9/204	3320/8/415	3184/8/398	4160/8/520	6432/8/804
4R9951 (50ml)	768/6/128	1024/8/128	1736/7/248	1687/7/241	2528/8/316	3920/8/490
4R9953 (250ml)	416/4/104	520/5/104	812/4/203	768/4/192	1320/5/264	2010/5/402
4R9955 (500ml)	304/4/76	380/5/76	608/4/152	576/4/144	1000/5/200	1550/5/310
DF200 (200ml)	236/4/59	295/5/59	496/4/124	488/4/122	780/5/156	1230/5/246
DF200 (700ml)	/	/	256/4/64	264/4/66	440/5/88	680/5/136

Remark: 1.All gas phase storage containers can be used as liquid phase storage
2.Tray with Rmodel in square arrangement

Mini Vapor LN₂ Tanks

The mini vapour phase liquid nitrogen tank is unique in the market. It realises real-time temperature monitoring, liquid level monitoring, automatic liquid replenishment, remote monitoring and alarm as well as automatic backup storage of monitoring data. Based on the capacitive level sensor, it can easily and automatically control the liquid level to achieve the vapor phase storage at -190°C at the top of the tank, which completely solves the technical problem of applying electronic information technology in low temperature environment of -196°C. It is a perfect combination of advanced liquid nitrogen tank manufacturing technology and intelligent monitoring technology, with light weight, small footprint, large capacity, efficient sample access, real-time monitoring of the liquid nitrogen tank's operating status and timely alarming in case of problems to ensure the safety of sample storage, mainly for users such as biomedical and sample banks.

Features

- 1 Real-time liquid nitrogen level and temperature monitoring
- 2 Automatic liquid nitrogen replenishment system, safe and reliable
- 3 Remote alarm function
- 4 Excellent internal temperature uniformity and stability
- 5 Live audible and visual alarm function
- 6 Remote monitoring and communication
- 7 Compatible with vapor phase and liquid phase storage modes
- 8 Real-time display of liquid nitrogen consumption
- 9 Warm air bypass design to reduce internal temperature fluctuations
- 10 Intelligent local and cloud-based data backup



Parameters

MODEL	YDS-175-216L
Max Storage Capacity	
No. of racks	6
1.2&2.0ml Cryovials (100 per box)	6000
Layers of each rack	10
Performance	
Volume of LN ₂ (L)	175
Static evaporation (L/day)	1.2
Specifications	
Opening Diameter(mm)	216
Height (mm)	1130
Outside Diameter(mm)	678
Empty Weight(kg)	56

BIO LN₂ TANK (Canister Series)

The BIO LN₂ TANKS (Canister series) are designed for long-term static storage of samples and are available in large capacity or extra-long shelf-life versions, using canister to store bio-samples in cryovials. Users can choose the right model for freezing biological samples according to their actual needs. They are mainly used for preserving semen, embryos, stem cells, skin, internal organs, vaccines and other active organisms. internal organs, vaccines and other active biological tissues.



Features

- 1 Ultra-low liquid nitrogen loss evaporation
- 2 5-year vacuum warranty
- 3 Canister to hold bio-samples
- 4 High strength & light weight aluminium construction for durability
- 5 Narrow neck reduces LN₂ consumption
- 6 Canisters in different colors. Easy identification
- 7 Optional safety lock

Parameters

Model	YDS-30	YDS-35	YDS-35-80	YDS-47-127/6	YDS-47-127/10	YDS-50B
Capacity(L)	31.5	35.5	35.5	47	47	50
NO. of canister	6	6	6	6	10	6
Canister Dia. (mm)	38	38	63	97	72	38
Canister height (mm)	276	276	276	276	276	276
No. of holder each canister	4	4	16	40	21	4
No. of Straws each holder	144	144	576	1440	1260	144
Static Evaporation(L/day)	0.12	0.12	0.22	0.36	0.36	0.24
Duration of Normal Operation	263	296	161	131	131	208
Opening Diameter(mm)	50	50	80	127	127	50
Height(mm)	648	672	675	730	730	744
Outside Diameter(mm)	451	451	451	508	508	508
Empty Weight(kg)	13.5	13.8	14.2	19	19	21
Gross Weight(kg)	39.1	42.7	43.1	57.3	57.3	61.7

BIO LN₂ TANK (Portable series)

This series of products is small, light, easy to carry, compact and lightweight, low daily consumption of liquid nitrogen in static storage, economical and practical. They are made of high-strength aircraft aluminum, high vacuum multi-layer insulation design, optional lid lock to protect the safety of storage.



Features

- 1 Made of high strength aircraft aluminium
- 2 Easy to carry for long-term storage of biological specimens
- 3 Supplied with a protective sleeve to prevent damage
- 4 Numbered canister for easy identification and independent access to samples
- 5 Optional lid lock to protect the safety of storage
- 6 High vacuum multi-layer insulation design and 5-year vacuum warranty

Parameters

Model	Capacity(L)	O.D (mm)	Dia. (mm)	Height (mm)	N.W(kg)	Duration(Day)
YDS-1-30	1.6	35	180	300	1.8	13
YDS-2-30	2.8	30	224	420	2.3	25
YDS-3	3.15	50	224	450	3.2	35
YDS-6	6.7	50	284	504	4.7	65
YDS-10	10.8	50	330	570	5.8	98
YDS-10-80	10.8	80	304	550	5.9	so
YDS-10-125	10.5	125	304	540	6.1	28
YDS-10-210	10	210	304	520	7.6	15
YDS-15	16.5	50	354	600	8.2	150
YDS-15-80	16.5	80	354	600	8.2	100
YDS-15-125	16.2	125	354	600	8.3	50
YDS-20	21.6	50	384	640	11.2	175
YDS-20-80	21.6	80	384	640	11.3	150
YDS-20-125	21.6	125	384	640	11.3	130

BIO LN₂ TANK (Medical&Lab series)

Low consumption of LN₂, large opening. Easy access square racks for applications requiring long term storage of bio-samples and frequent sample extraction. The light weight and small footprint of the Medical&Lab LN₂ tanks make them the first choice for small sample banks.



Features

- 1 Large opening for easy sample access
- 2 Large capacity with low LN₂ consumption
- 3 Multi-layer insulated vacuum design
- 4 Optional lid lock
- 5 Large opening for easy sample access
- 6 Optional intelligent monitoring system
- 7 High strength neck design
- 8 High strength light weight aluminium construction

Parameters

Model	YDS-35-125	YDS-47-127	YDS-50-125	YDS-65-216	YDS-65-216L	YDS-95-216	YDS-115-216	YDS-120-216	YDS-145-216	YDS-175-216
Max Storage Capacity										
No. of Square rack	6	6	6	4	6	6	6	4/6	6	6
1.2&2ml Cryovials (100 per box)	—	—	—	2000	2400	3000	3600	4000/3600	4800	6000
1.2&2ml Cryovials (25 per box)	600	750	900	—	—	—	—	—	—	—
layers of rack	4	5	6	5	4	5	6	10/6	8	10
Performance										
LN ₂ Capacity(L)	30	47	50	65	65	95	121	121	145	175
Static Evaporation(L/day)	0.37	0.45	0.43	0.78	0.78	0.81	0.85	0.85	0.85	0.87
Duration of Normal Operation(day)	97	105	115	83	83	117	142	142	171	202
Specifications										
Opening Dia(mm)	125	127	125	216	216	216	216	216	216	216
Height(mm)	747	716	771	715	700	950	860	1050/860	1020	1130
Outside Diameter(mm)	451	508	508	575	678	678	678	575/678	678	678
Empty Weight(kg)	17	21	22.5	28.5	32	38	45	43.5/45	48	56

LN₂ DRY SHIPPER

The dry shipper series is suitable for transporting samples in deep cryogenic conditions (vapor phase storage at temperatures below -190°C), avoiding the risk of liquid nitrogen spillage during transport, and used in short time air transport. The internal liquid nitrogen adsorber absorbs and preserves the liquid nitrogen without spilling it, even if the container is tipped over. A special stainless steel mesh sieve separates the storage space from the liquid nitrogen adsorber, which prevents the liquid nitrogen adsorber material from being mixed into the cryovials. It is mainly used for laboratory and users who need to transport small quantities of samples for short periods of time.

Features

- 5 Year Vacuum Warranty
- Large opening for easy sample access
- No LN₂ Spillage
- Cryo absorbant
- High strength light weight aluminium construction
- Vapor phase cryogenic storage
- Optional lockable lids
- Multi-layer insulated vacuum design



Parameters

Model	YDH-3	YDH-4-125	YDH-6-80	YDH-10-125	YDH-20-216	YDH-25-216
Tank Capacity(L)	3	4	6	10	20	1.5
LN ₂ Adsorption(L)	1.5	2	2.4	4	8	10
No. of Canister	1	N/A	1	1	N/A	1
Dimensions of Canister(mm)	Ø38*120	N/A	Ø70*276	N/A	N/A	N/A
No. of Holders each canister(mm)	3	N/A	21	N/A	N/A	N/A
No. of 2ml cryovial each holder	3	N/A	6	N/A	N/A	N/A
No. of 2ml cryovial	9	N/A	126	100	N/A	400
25 well box	N/A	N/A	N/A	4	N/A	N/A
100 well box	N/A	N/A	N/A	N/A	N/A	4
50ml blood bag	N/A	4	N/A	N/A	N/A	N/A
250ml blood bag	N/A	N/A	N/A	N/A	8	N/A
Static Evaporation(L/day)	0.12	0.45	0.21	0.55	0.89	0.89
Duration of Nomal Operation(day)	13	4	11	7	9	11
Opening Dia.(mm)	50	125	80	125	216	216
Height(mm)	435	615	435	530	650	650
Outside Diameter(mm)	224	224	300	300	396	396
Empty Weight(kg)	4.7	8	5.5	6.8	12	12.5
Gross Weight(kg)	6.0	11.3	10.4	14.9	28.3	32.9

Self-pressurising LN₂ refill tanks

The self-pressurising series of liquid nitrogen replenishment tanks are used for transporting and storing low temperature liquid nitrogen, and are high performance storage containers for low temperature liquid nitrogen media, manufactured from high quality stainless steel. The self-pressurising series of liquid nitrogen tanks consist of a control structure and a tank body. The control components are mainly inlet (discharge) valves, emptying valves, pressurisation valves, safety valves, level gauges, pressure gauges and castors. All models in this series are equipped with four mobile universal castors to facilitate the use and movement of the containers in different places. They are currently widely used in industries and fields such as the mould industry, animal husbandry, pharmaceuticals, semiconductors, food, aerospace, military and cryogenic chemicals.

Features

- Unique neck design to reduce the evaporation rate of liquid nitrogen.
- Well-established safety structures
- Easy to move with universal castors
- Optional automatic refill system
- 5-year vacuum warranty
- Protective operating ring
- Unique polishing stainless steel tank polishing
- Low temperature pressure stabilisation valve
- Optional intelligent monitoring system for remote monitoring



Parameters

Model	Unit	YDZ-50	YDZ-100	YDZ-200	YDZ-230
Capacity	L	55	110	220	250
Effective volume	L	50	100	200	230
Outer diameter	mm	455	556	656	656
Height	mm	960	1100	1300	1400
N.W.	kg	50	68	125	140
Calibre	mm	50	50	50	50
Static LN ₂ daily evaporation rate	%	2	1.2	1	1
Standard working pressure	Mpa	0.05	0.05	0.05	0.05
Maximum working pressure	Mpa	0.09	0.09	0.09	0.09
Volume of infusion	L/min	>5 L/Min	N5L/Min	>10 L/Min	>10 L/Min
Primary safety valve opening pressure	Mpa	0.099	0.099	0.099	0.099
Secondary safety valve opening pressure	Mpa	0.15	0.15	0.15	0.15
Rupture Disc Bursting Pressure	Mpa	—	—	0.35	0.35
Pressure gauge indication range	Mpa	0~0.25	0~0.25	0~0.25	0~0.25

Controlled-rate Freezer

This series of programmable cryoboxes is a high performance, safe and reliable freezing system with adjustable temperature change rate, which is now widely used in various fields such as light industry, agriculture, medicine and basic biological research for freezing and storage of lymphocytes, tissue banks, bone marrow cells, tumour cells, animal and plant cells, cardiomyocytes, etc. The newly designed integrated Cryobox system uses the latest temperature control technology and liquid nitrogen dispersion technology to make the programmed cooling process homogeneous and stable, allowing IO/00 operation, effectively meeting the needs of GLP laboratories.?

Features

Microprocessor controlled, high precision control

Good thermal insulation performance.

Dual probes for precise temperature control with simultaneous touch screen display.

Curve display of cavity and sample temperature and other parameters.

Automatic data saving and backup to ensure traceability.

Powder coated chamber construction for durability.

Stainless steel interior for silent operation and quiet operation

Front opening door for easy access to samples.

Uniform dispersion of liquid nitrogen to ensure temperature uniformity



Parameters

Models	CX-17	CX-34	CX-51
Temp. Range	50°C to -190°C		
External dimensions (mm)	810*540*790	960*540*790	1110*540*790
Internal dimensions (mm)	180*305*330	330*305*330	485*305*330
Capacity (L)	17	34	51
N.W (kg)	64	75	83
Cooling rate	0.1-60°C/min		
Heating rate	0.1-10°C/min		
Temp. variation control method program control	<2°C (Temperature difference between two points in the chamber during cooling)		
Control mode	Microprocessor controlled		
Program control	Sample temperature/chamber temperature		
Display screens	7" Touch Screen		
Available programs	6 preset programs, 20 user set programs		

Liquid level monitoring CORK

The liquid nitrogen tank cork monitor is a product specially developed and produced for measuring the liquid level and temperature of aluminum liquid nitrogen tanks. Using ultra-low temperature monitoring technology and Internet of Things communication technology, real-time monitoring of the temperature and liquid level in the liquid nitrogen tank can be uploaded to the system platform through various communication methods such as LORA and NB-IOT. The monitor adopts an ultra-low power consumption design scheme, and the built-in high-efficiency nickel battery can maintain the operation of the instrument for 1-2 years.

Features

ALL-IN-ONE Design

The integrated structure design of monitoring equipment, cork and sensor, the monitoring equipment is embedded in the body of the cork

Data collection

Real-time liquid level and temperature data collection in liquid nitrogen tanks via level and temperature sensors

Alarms

Alarm data (liquid level alarm, temperature alarm, power alarm, fault alarm, etc.) are transmitted to the cloud platform in real time

Ultra low power consumption

The built-in high-efficiency nickel battery can keep running for 1-2 years, and it can automatically detect the remaining battery capacity.

Real-time display

24h real time display of liquid level and temperature data, data is regularly transferred to the cloud platform and saved as historical records



Accessories

		
Locking Cover	Level measuring Scale	Intelligent monitoring terminal
		
Caster Base	Racks	Box
		
Cork	LN ₂ Pump	Alarm
		
Blood bag rack	Canister	Gloves

Helping patients breathe easy



Oxygen therapy can be an effective treatment for those who experience breathing issues because of the Corona Virus, Chronic Obstructive Pulmonary Disease (COPD), Pneumonia, Asthma, Cystic Fibrosis, Sleep Apnea, Cardiac ailments etc.

Medical Oxygen Concentrators

The Trufrost Oxygen Concentrator is a high quality equipment device that provides oxygen through a mask or a nose cannula. It is available as a medical and portable device and comes with all attachments and accessories. It enables your body to breathe easily and deliver oxygen more efficiently to the organs that helps boost body functionality. This handy device is therefore a boon for Covid-19 patients or those who wish to self-manage asthma or COPD.



How It Matters in the Battle Against Coronavirus

Before the Corona Virus affected the world, preventive health care check ups pertaining to monitoring oxygen levels were not a priority. But the Corona pandemic has changed everything and now people have become more sensitive to breathing problems and respiratory issues.

Portable Oxygen Concentrator - A Game Changer

Having a portable concentrator can be handy and convenient for those with severe breathing problems. The portable oxygen concentrator device receives air, purifies it, and then delivers the purified air to the body. The device provides an effective method to deliver oxygen-rich air through your body especially when your lungs are not absorbing an adequate amount of oxygen on their own.

■ Low Noise Design



AE-5-W



JAY-5BW

5L/minute Flow Rate

Trufrost offers two portable oxygen concentrator models. These are designed for a flow rate of 1-5L/minute and oxygen concentration of 93% (± 3%) and comes with alarms for power failure, high and low pressure, low oxygen purity and low flow.

Key Features

- ◆ Filters are easy to replace and wash
- ◆ The metal outlet is designed to be used with the humidifier adaptor
- ◆ The easy dial flow control, makes setting the flow easy for any patients
- ◆ Innovative big size LCD display convenient to view the operating parameters
- ◆ US humidifier bottle with 6 PSI pressure relief valve, comfortable to inhale oxygen
- ◆ Inner case housing adopt ceramics technique, non spray paint
- ◆ Customized mute cotton make sure non pulverization phenomenon min 3 years
- ◆ The inside pipeline uses medical grade silicone tube and nylon tube
- ◆ Cooling system: copper tube and aluminum fins, compare with only aluminum or copper tube, better for heat dissipation and ensure the machine to continuously work for 24 hours without overheat interruption.



Model	AE-5-W	JAY-5BW
Oxygen Flow Rate range	5L/Min(can be adjusted 1L-5L/min)	5L/Min(can be adjusted 1L-5L/min)
Oxygen concentration	93% ±3%	93% ±3%
Noise Level	less than 36dB	less than 45dB
Outlet Pressure	45 ± 10% kPa	40kPa-70kPa (6-10 PSI)
Atmospheric Pressure Range	86kPa-106kPa	86kPa-106kPa
Features	Low Noise Design, HEPA Filters, Suitable for 24hrs operation, 20000 hours long working life, Nebulizer (optional), SPO ₂ sensor (optional), Remote control (optional)	Replacable and washable filters, Suitable for 24hrs operation
Alarm	Power failure alarm, Low purity alarm (less than 82%), Overheat alarm, High and low pressure alarm (optional)	Power failure alarm, compressor overheating stop alarm, low flowrate alarm, high & low purity alarm (less than 82%)*
Product Size	372x340x612mm	360x300x600mm
Gross Weight/Net Weight	24/21Kgs	24/22Kgs
Rated Power	390W	540W
Power Supply	220V, 50Hz, 1Ph	220V, 50Hz, 1Ph
Color	Off-white	Off-white
Certifications	CE, ISO-13485, RoHS	CE, ISO-13485

Specifications are subject to change without prior notice due to continuous product development

* When oxygen purity is < 85%, the blue lamp is on, when oxygen purity is < 85%, red lamp is on, indicating low purity Accuracy: ±3%

10L/minute Flow rate

Trufrost portable oxygen concentrators are designed for a flow rate of 1-10 L/minute and oxygen concentration of 93% ($\pm 3\%$) and comes with alarms for power failure, high and low pressure, low oxygen purity and low flow.

■ Low Noise Design



AE-10-W

Key Features

- ◆ Filters are easy to replace and wash
- ◆ The metal outlet is designed to be used with the humidifier adaptor
- ◆ The easy dial flow control, makes setting the flow easy for any patients
- ◆ Innovative big size LCD display convenient to view the operating parameters
- ◆ US humidifier bottle with 6 PSI pressure relief valve, comfortable to inhale oxygen
- ◆ Inner case housing adopt ceramics technique, non spray paint
- ◆ Customized mute cotton make sure non pulverization phenomenon min 3 years
- ◆ The inside pipeline uses medical grade silicone tube and nylon tube
- ◆ Cooling system: copper tube and aluminum fins, compare with only aluminum or copper tube, better for heat dissipation and ensure the machine to continuously work for 24 hours without overheat interruption.



Model	AE-10-W
Oxygen Flow Rate range	10L/Min(can be adjusted 1L-10L/min)
Oxygen concentration	93% $\pm 3\%$
Noise Level	less than 50dB
Outlet Pressure	45 \pm 10% kPa
Atmospheric Pressure Range	86kPa-106kPa
Features	Low Noise Design, HEPA Filters, Suitable for 24hrs operation, 20000 hours long working life, Nebulizer (optional), SPO ₂ sensor (optional), Remote control (optional)
Alarm	Power failure alarm, Low purity alarm (less than 82%), Overheat alarm, High and low pressure alarm (optional),
Product Size	372x340x612mm
Gross Weight/Net Weight	28/24Kgs
Rated Power	610W
Power Supply	220V, 50Hz, 1Ph
Color	Off-white
Certifications	CE, ISO-13485, RoHS

Specifications are subject to change without prior notice due to continuous product development

*When oxygen purity is < 85%, the blue lamp is on, when oxygen purity is <85%, red lamp is on, indicating low purity Accuracy: $\pm 3\%$





Foot Press Water Dispensers

Supermarkets, offices and commercial organisations are beginning to explore how they can avoid multiple contacts to surfaces that are often used. One such product is a bottled water dispenser. You can now experience, hygiene, style and convenience, all in one smart package with the 'hands free' water dispensers from Trufrost. Ideal for research labs and bio-medical, life sciences and healthcare applications, offices, reception areas and more, you get pure water either hot, cold or at ambient temperature dispensed at the press of your foot.

Key Features

- ◆ Hot, cold and ambient water options
- ◆ Foot operated mechanism ensures hygiene
- ◆ LED indicators
- ◆ Compact design
- ◆ CFC free refrigerant



FP-BWD

Technical Specifications



Model	FP-BWD
Cooling Method	Compressor
Cooling Capacity	3 L/Hr. >15°C
Cooling Tank Capacity	3.2L
Cooling System Wattage	86W
Heating Capacity	5 L/Hr (85-90°C)
Hot Tank Capacity	1.0L
Heating System Wattage	500W
Dimensions WxDxH (mm)	347 x 370 x 1045
Net Weight	16Kg
Electricals	220V / 50Hz / 1Ph

Based on standard test conditions

Specifications are subject to change without prior notice due to continuous product development

Suitable for standard polycarbonate jars/bottles (not supplied with dispensers).

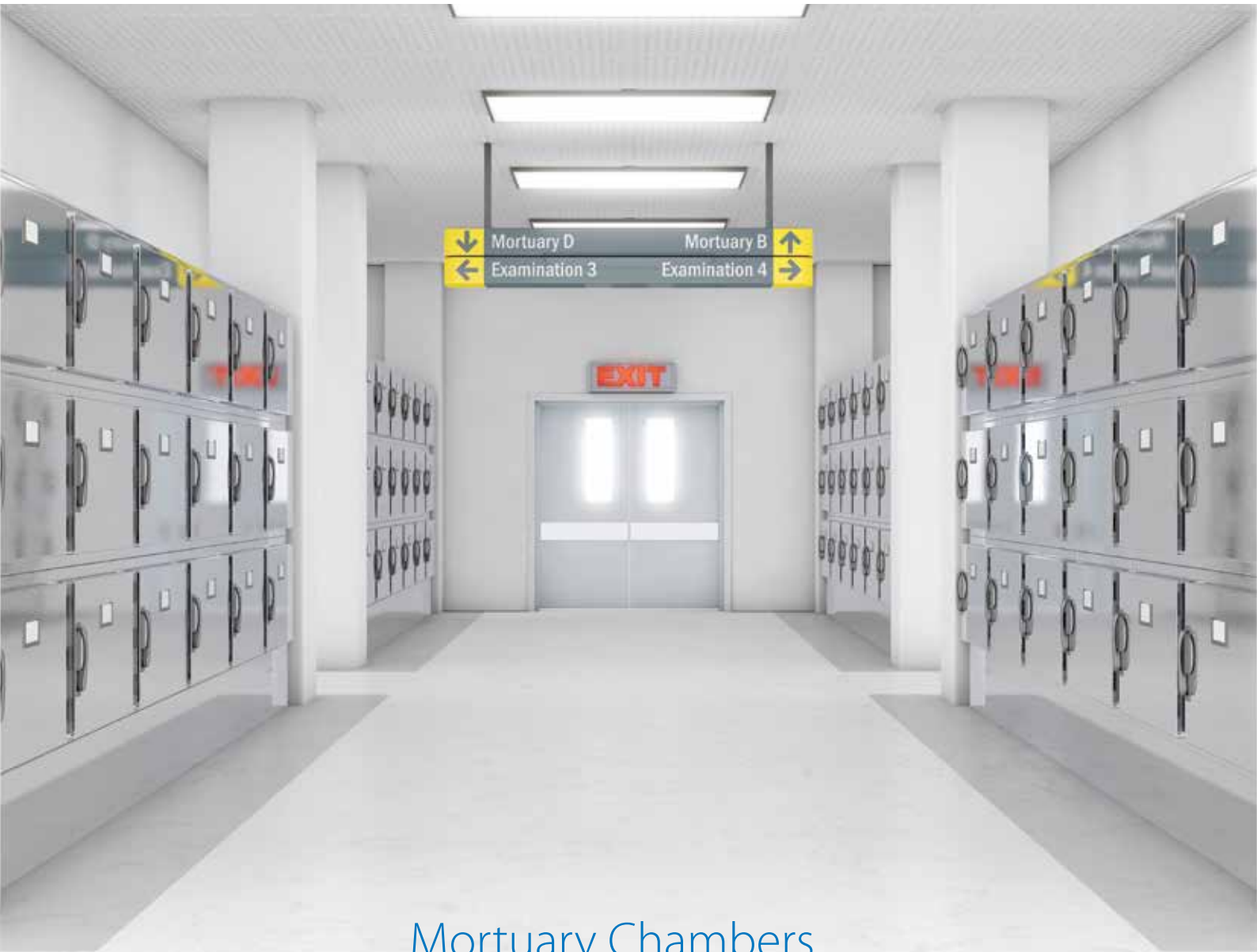
For those you loved



Care after life

Human lives are important, even after they are gone. There are times when the burial or cremation of dead bodies is delayed due to emergency situations. Cadavers, in such situations need to be kept in cool condition to prevent bodies from decomposition. That is where the need of mortuary chambers comes in.





Mortuary Chambers

Also known as morgues, mortuary cabinets or mortuary refrigerators, mortuary chambers are a vital part of a hospital's infrastructure. They are also widely used by railways, airports, disaster camps and defence forces as a useful civic amenity.

Trufrost Mortuary Chambers

Trufrost mortuary chambers are low temperature refrigerated cabinets designed to keep dead bodies cool (generally between 0°C to 5°C) for short or long time. These units are widely used at hospitals, railways, airports, disaster camps, defence forces etc. Our standard mortuary cabinets are available in configurations of one, two, four and six chambers.



Models available



TMC-6

Trufrost Mortuary Chamber TMC-6
For storage of 6 body trays in 2 levels



TMC-4

Trufrost Mortuary Chamber TMC-4
For storage of 4 body trays in 2 levels



TMC-2

Trufrost Mortuary Chamber TMC-2
For storage of 2 body trays in 2 levels





TMC-1

Mobile Single Body Mortuary

Trufrost TMC-1 is a single body mortuary that finds applications in not just hospitals and similar institutions but also homes where the last rites are delayed for some reason. This comes with strong castors for ease of mobility and two glass lids on the top.



Key features:

- ◆ Energy efficient & environment friendly cooling system
- ◆ 80mm, CFC-free cyclopentane insulation
- ◆ Specially designed to ensure hygiene
- ◆ Easy to clean and maintain
- ◆ Tropicalized for tough weather conditions
- ◆ Micro-processor based controller with digital temperature display
- ◆ Vapour proof lighting
- ◆ Corrosion resistant exterior and interior:
 - ◆ Exterior: pre-coated GI sheet
 - ◆ Interior construction: SS304; hot dipped MS structure with SS trays
- ◆ Individual lock and key for each door
- ◆ Strong casters for ease of mobility

Technical Specifications

Model	Body Capacity	Doors	Door (WxH)	Width	Depth	Height	Height with Cooling Unit	Cooling System	Temperature Range
TMC-6	6	6	610x500	2535	2360	1768	2611	Forced Draft	0-5°C
TMC-4	4	4	610x500	1768	2360	1768	2528	Forced Draft	0-5°C
TMC-2	2	2	610x500	1184	2360	1768	2528	Forced Draft	0-5°C
TMC-1	1	1	610x500	737	2360	660	-	Static	0-5°C

Voltage: 220-240V/50Hz

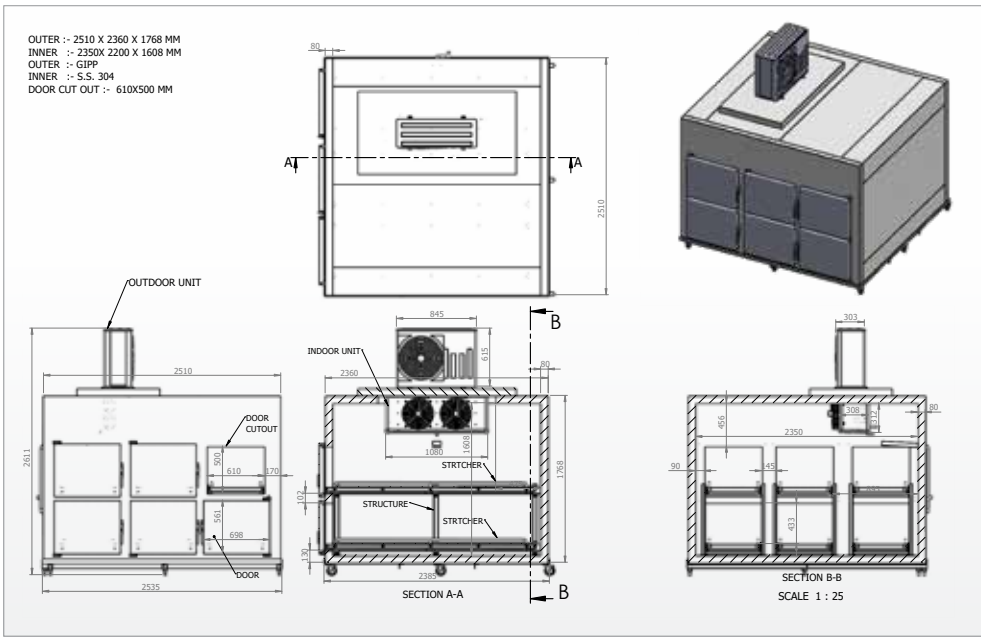
All dimensions in mm

Specifications are subject to change without prior notice due to continuous product development

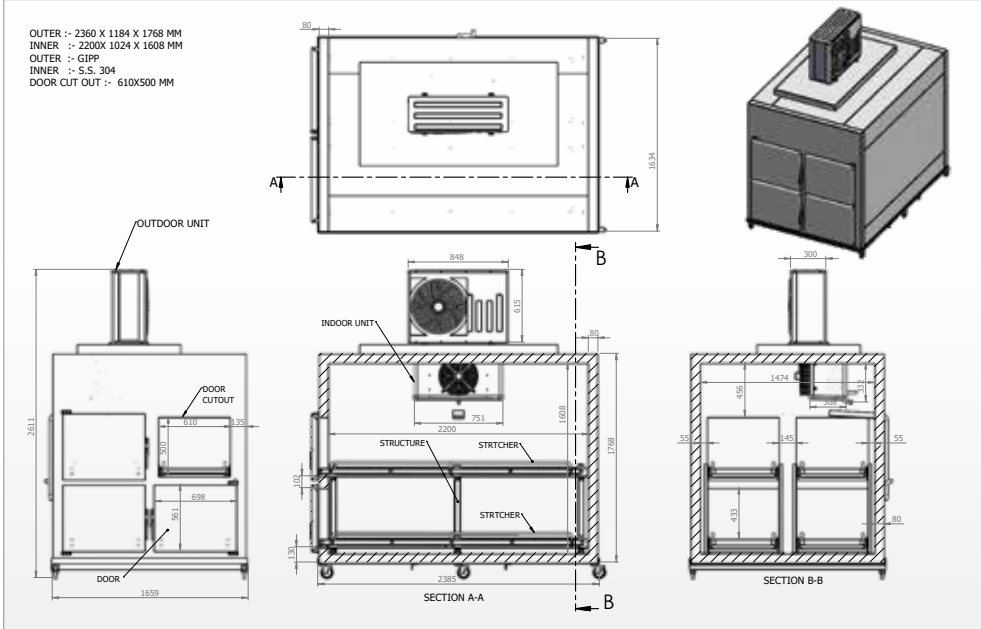


Line Drawings

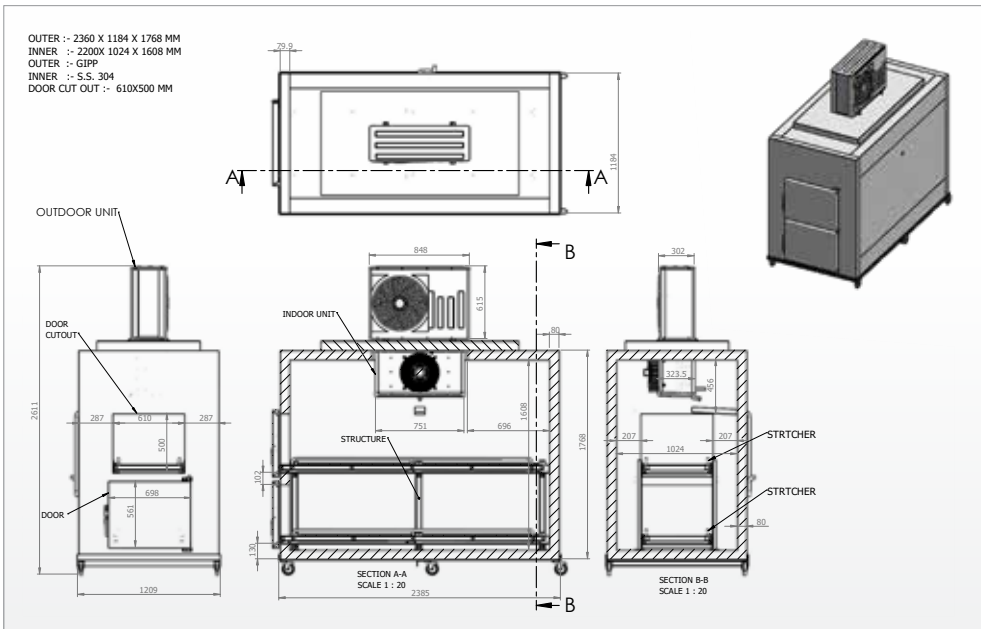
TMC-6



TMC-4



TMC-2



Names who trust us





Trufrost Cooling Pvt. Ltd.

1214 & 1215, 12th Floor, Tower B, Emaar Digital Greens, Golf Course Extn. Road, Sector 61, Gurugram - 122011, India

Tel: +91-124-4246560 Email: jennifer@trufrost.com www.trufrost.com www.trufrostbiomedical.com
UAE: +971-54-557-9395, +971-55-676-1323, Email: middleeast@trufrost.com

East India: 9319579755

West India: 9560505483

North India: 9667798716

South India: 9289356258

Central India: 9289759359

Cryogenic Freezers • Ultra Low Temperature Freezers • Low Temp Freezers • Combined Freezers & Refrigerators • Convertible Freezers & Refrigerators • Biomedical Freezers
Biomedical Freezers • Visi Freezers • Blood Bank Refrigerators • Explosion Proof Lab Refrigerators • Pharmacy Refrigerators • Ice Lined Refrigerators • Traditional Medicine Coolers
Biomedical Refrigerators in SS • Mobile Freezers / Coolers • Medical Vaccine Carriers • Blood Platelet Incubators • Lab Use Flake Ice Machines • Coldrooms
Liquid Nitrogen Storage Solution • Medical Oxygen Concentrators • Foot Press Water Dispensers • Mortuary Chambers



www.trufrost.com